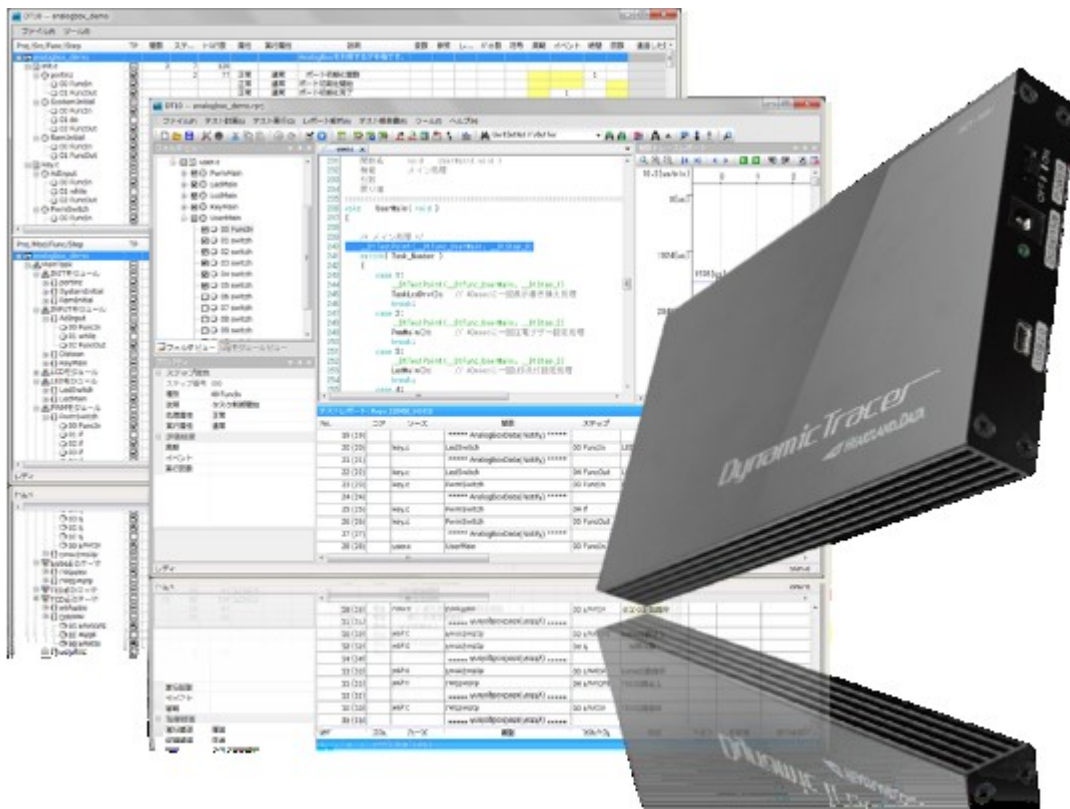


Dynamic Test DT10

Automotive Edition Install Manual



361 Fukui-cho, Ashikaga city, Tochigi prefecture 326-0338 Japan

Tel:+81-284-22-8791 / Fax:+81-284-22-8792

URL: heartlanddata.com

About this manual

- This manual explains how to install the DT10 Automotive Edition application and setup its license.
- This program and manual are protected by Copyright Law, and no reproduction, reprinting or modification whatsoever is permitted.
- The content and specification of this product are subject to change without prior notice.
- Please acknowledge that our company cannot assume any responsibilities for the result of use.
- Microsoft, Windows, and the Windows logo are registered trademarks in the United States and other countries of United States Microsoft Corporation.
- All other company names, logos, and product names, etc. specified are the trademarks or registered trademarks of each respective company.

Contents

- 1. INSTALLATION OF DT10 AUTOMOTIVE EDITION - 1 -**

 - 1.1. SUPPORTED PLATFORMS - 1 -

 - 1.1.1. *Operating Systems* - 1 -
 - 1.1.2. *Computer spec.* - 1 -
 - 1.1.3. *Memory spec.* - 1 -
 - 1.1.4. *Hard disc spec.* - 1 -
 - 1.1.5. *Display spec.* - 2 -

 - 1.2. INSTALLATION STEP..... - 2 -
 - 1.3. APPLICATION SETUP [32BIT OS] - 3 -

 - 1.3.1. *Prerequisite check and installation*..... - 3 -
 - 1.3.2. *Installation of application and each tool.* - 5 -

 - 1.4. APPLICATION SETUP [64BIT OS] - 10 -

 - 1.4.1. *Prerequisite check and installation*..... - 10 -
 - 1.4.2. *Installation of application and each tool* - 12 -

 - 1.5. SETUP OF THE USB DRIVER OF DYNAMICTRACER..... - 17 -
 - 1.6. TROUBLESHOOTING FOR THE INSTALLATION - 18 -
 - 1.7. UNINSTALLATION OF DT10 AUTOMOTIVE EDITION - 24 -

 - 1.7.1. *Uninstall by “Add or Remove Programs”*..... - 24 -
 - 1.7.2. *Uninstall by “setup.exe”*..... - 24 -

- 2. SETUP FOR NODELOCK LICENSE..... - 25 -**

 - 2.1. SETUP FOR NODELOCK LICENSE - 25 -
 - 2.2. LICENSE UPDATE..... - 27 -
 - 2.3. TROUBLESHOOTING OF NODELOCK LICENSE - 27 -
 - 2.4. CONFIRMATION OF THE UNIQUE INFORMATION OF THE MACHINE - 28 -

- 3. SETUP OF FLOATING LICENSE - 29 -**

 - 3.1. SETUP OF WINDOWS SERVER..... - 29 -

 - 3.1.1. *System Requirements* - 29 -
 - 3.1.2. *Confirmations before the installation* - 30 -
 - 3.1.3. *Installation of license manager*..... - 31 -
 - 3.1.4. *Setup of a client PC*..... - 37 -
 - 3.1.5. *Licensing confirmation*..... - 38 -
 - 3.1.6. *Uninstall DT10LicenseManager* - 40 -

 - 3.2. LICENSE UPDATE FOR WINDOWS SERVER - 41 -

 - 3.2.1. *Update at the license server machine* - 41 -

- 3.2.2. *Update at the client machine* - 41 -
- 3.2.3. *Licensing confirmation* - 41 -
- 3.3. SETUP OF A LINUX SERVER - 42 -
 - 3.3.1. *System Requirements* - 42 -
 - 3.3.2. *Confirmations before the installation* - 43 -
 - 3.3.3. *Installation flow* - 43 -
 - 3.3.4. *Setup of a client PC* - 45 -
 - 3.3.5. *Licensing confirmation* - 46 -
 - 3.3.6. *Uninstall DT10AutomotiveEditionLicenseManager* - 47 -
- 3.4. LICENSE UPDATE FOR LINUX SERVER - 48 -
 - 3.4.1. *Update at the license server machine* - 48 -
 - 3.4.2. *Update at the client machine* - 48 -
 - 3.4.3. *Licensing confirmation* - 48 -
- 3.5. TROUBLESHOOTING FOR THE FLOATING LICENSE - 49 -
- 4. CHANGE HISTORY** - 55 -

1. Installation of DT10 Automotive Edition

This chapter helps you prepare for the DT10 Automotive Edition (hereinafter called DT10AE) installation and explains how to install it.

1.1. Supported platforms

DT10AE and its tool support the following platforms:

1.1.1. Operating Systems

- Windows 7
- Windows 8 / 8.1
- Windows 10

* DT10AE supports both the 32 bit and 64 bit Versions.

* You need to install Windows Installer 3.1 and Microsoft.NET Framework 2.0 before installing DT10AE.

(Without those, DT10AE cannot be set up. Please install them from Windows Update.)

1.1.2. Computer spec.

- PC / AT compatible machine only.
- Must be equipped with a 2GHz Pentium 4 processor equivalent or higher.
- System with 2CPUs or more recommended.
- With USB2.0 port (supporting high-speed transfer). (USB1.0 is not supported.)

1.1.3. Memory spec.


- Installed memory of more than 1GB is required.
- Installed memory of more than 2GB is recommended.

1.1.4. Hard disc spec.


- 100MB or more of free space is required to install DT10AE.
- 2GB or more of free space is required to analyze the Test Report.
1GB or more of free space is needed to collect the Test Report.

1.1.5. Display spec.

- XGA resolution (1024 × 768 pixels) or more is needed.
- WXGA resolution (1024 × 768 pixels) or more is recommended.
- Please use by the default or the standard size for the font size.

 Caution	Administrator privilege is needed to install the DT10AE. Install with a user account which has the administrator privilege.
	The installed application can then be used with a normal user account.

1.2. Installation Step

 Caution	Please uninstall DT10AE Ver11.10 if it has been already installed before installing the newest version.
---	--

DT10 Automotive Edition consists of the following 2 applications; "DT10 Automotive Edition" and "DT-ProjectBuilder".
The following step shows you how to install DT10 on a Windows PC.
About the installer, please download from our support site, or please use one in the CD-ROM we provide.

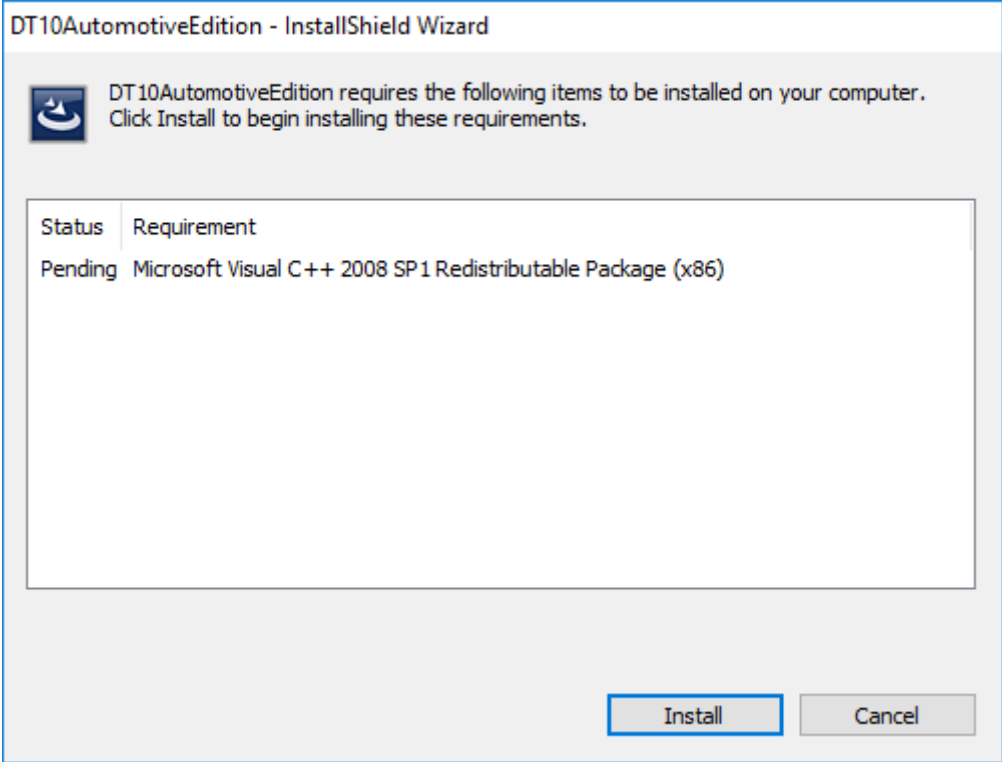
1. Check that DynamicTracer is not connected to the PC being used.
2. Execute "setup.exe" via the downloaded setup file.
3. It is advisable to ensure a stable environment, whereby no software is being executed and background software applications are closed when installing DT10AE. Install DT10AE with the following displayed instruction:
4. After the installation, please start DT10AE application.
 - * At this step, the application starts as "Free Edition" if no license has been setup or a license is invalid.
In case the license is valid, the application starts as "Standard Edition".
Setup flow is referred in the other section.
5. Switch on the DynamicTracer and connect it to the PC being used.
6. Install the USB driver for DynamicTracer.
 - * Installation flow the USB driver is referred in the other section.

1.3. Application setup [32bit OS]

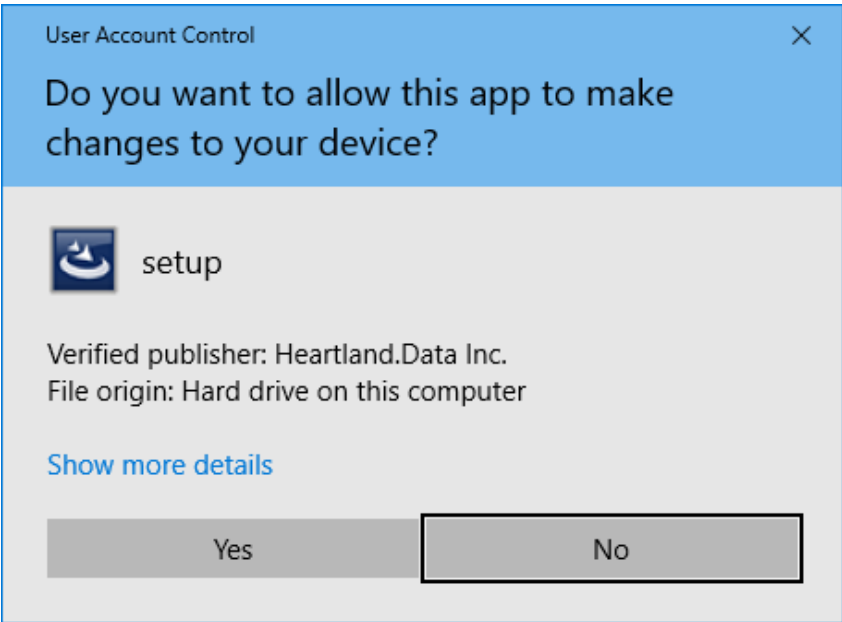
Execute "setup.exe", whereupon the installation of the DT10AE application and required files starts.
Execute the following steps and the setup is completed.

1.3.1. Prerequisite check and installation

When executing "setup.exe", the following window is displayed if "Microsoft Visual C++ 2008 SP1 Redistributable Package(x86)" is not installed on your PC. If you have already installed it on your PC, the next step is displayed.

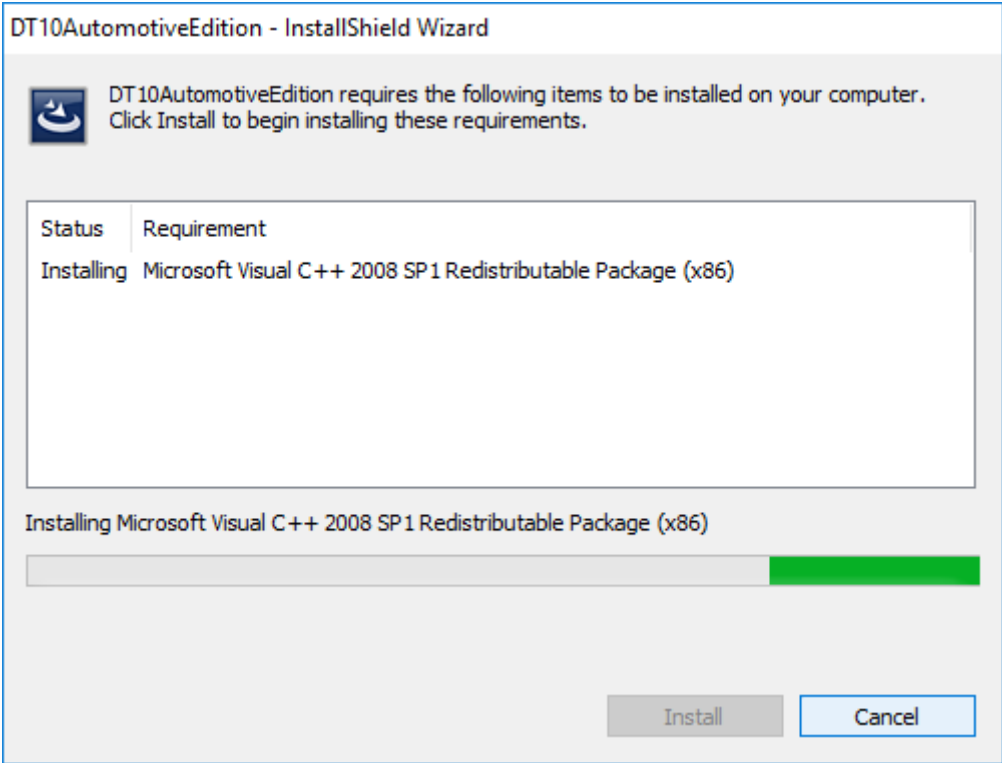


If you click the 'Install' button, 'User Account Control' will be displayed.



Please confirm the 'Verified Publisher' and click 'Yes', then the installation will get started.

“Microsoft Visual C++ 2008 SP1 Redistributable Package(x86)” is installed.



The installation will take a few minutes and it will be up to the machine situation.

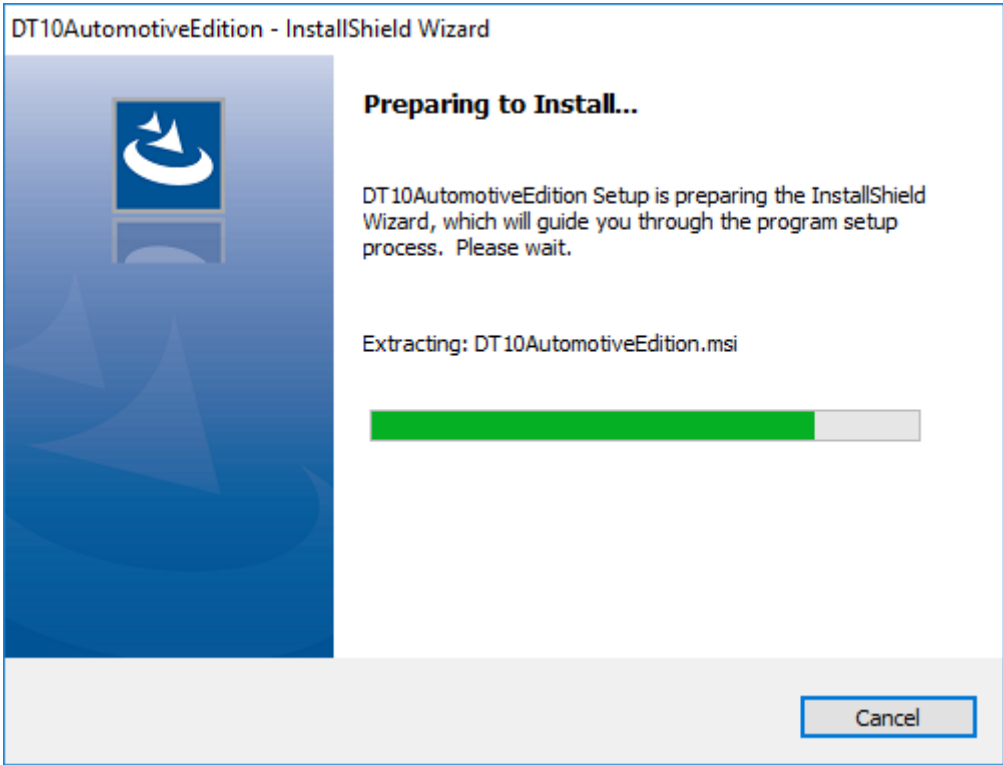
If it is finished, then the installation of DT10AE Application will begin.

You may be recommended to reboot the PC, but please continue installing without rebooting it.

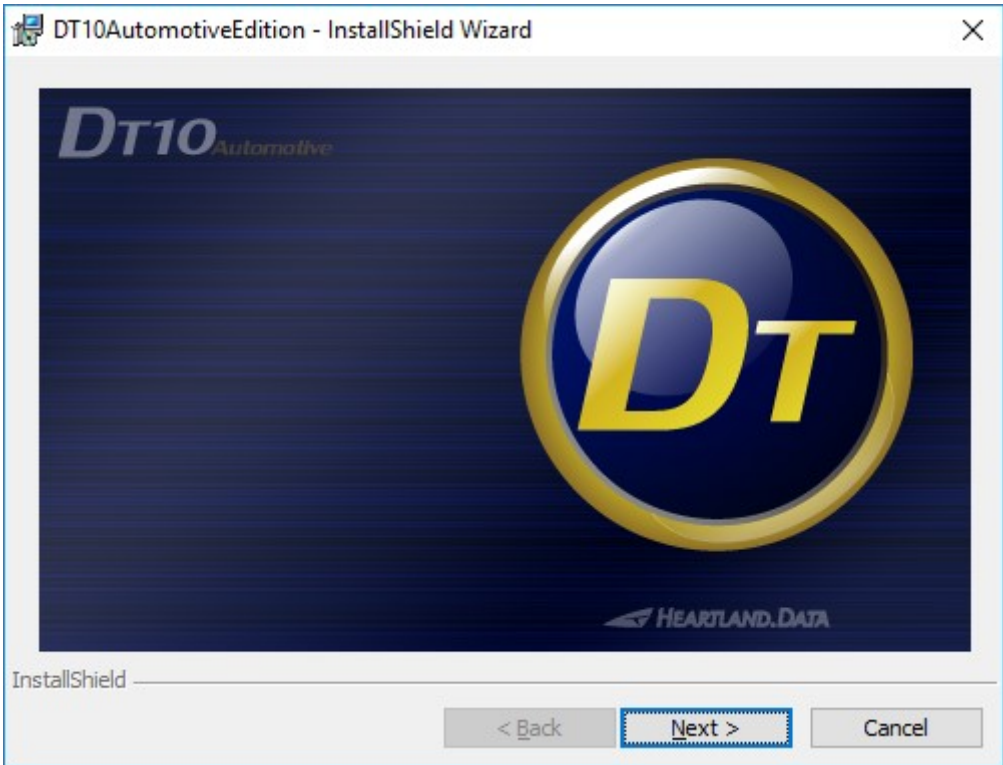
When the installation and setup of the DT10AE are complete, reboot it manually.

1.3.2. Installation of application and each tool.

Start the DT10AE setup, and the setup file is expanded.

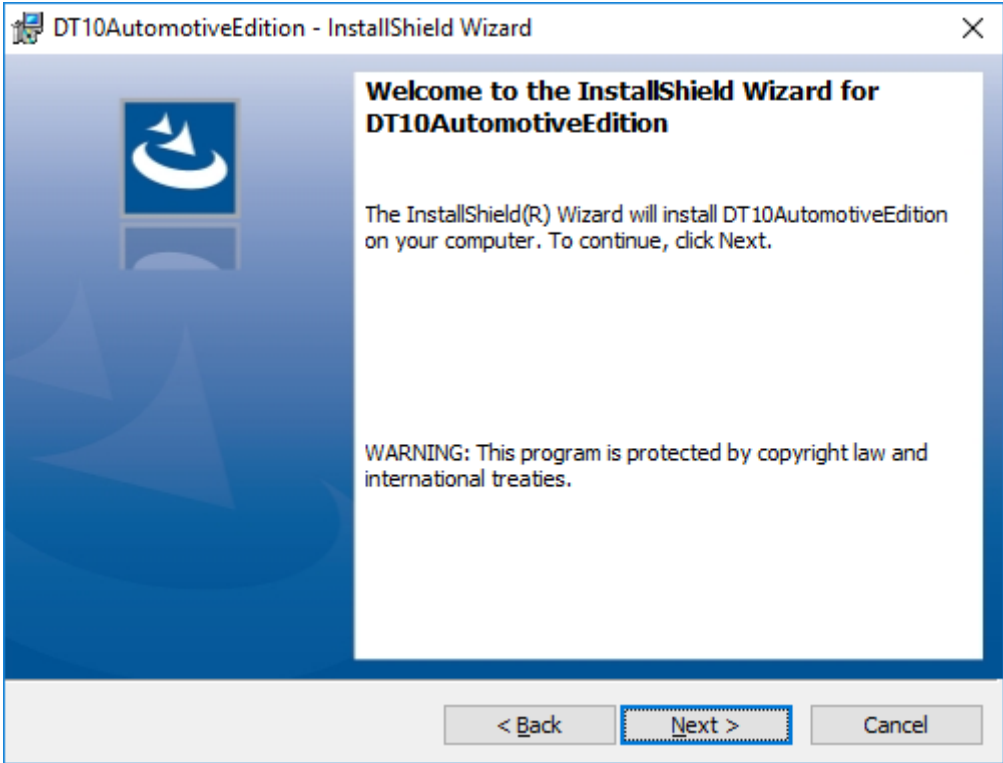


When the expansion is complete, the installation is ready and the splash view is displayed.



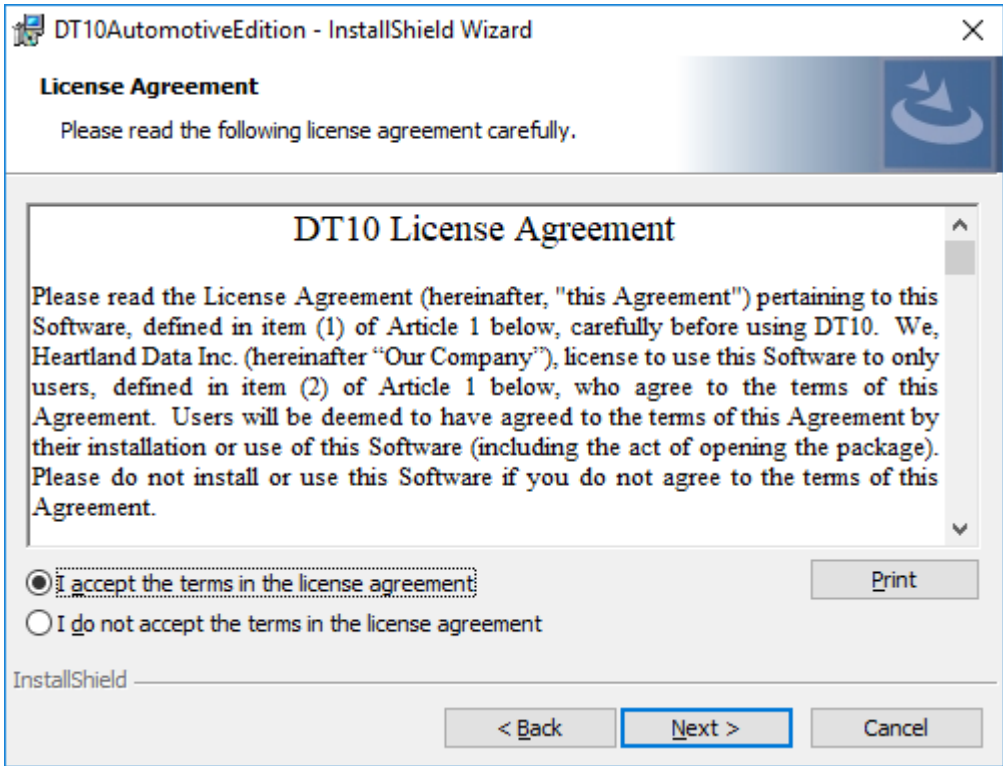
Click the "Next" button.

The welcome view is displayed.



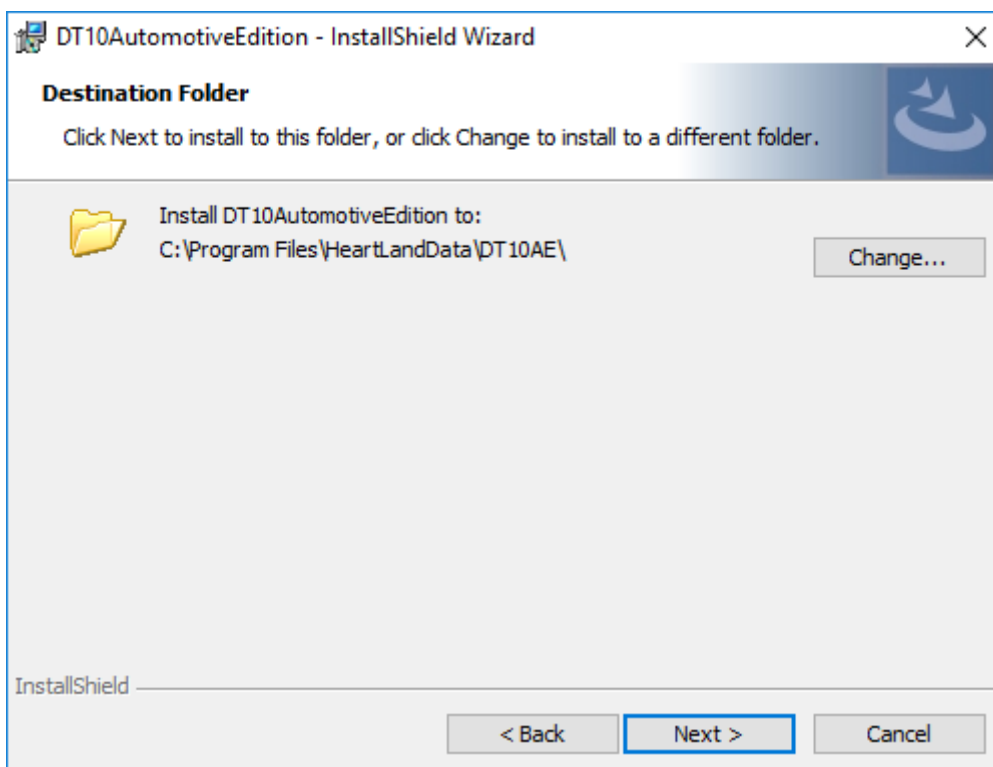
Click the "Next" button.

License Agreement is displayed.



Please confirm the content and select "I accept the terms in the license agreement". Then Click "Next".

The “Destination Folder” view is displayed.



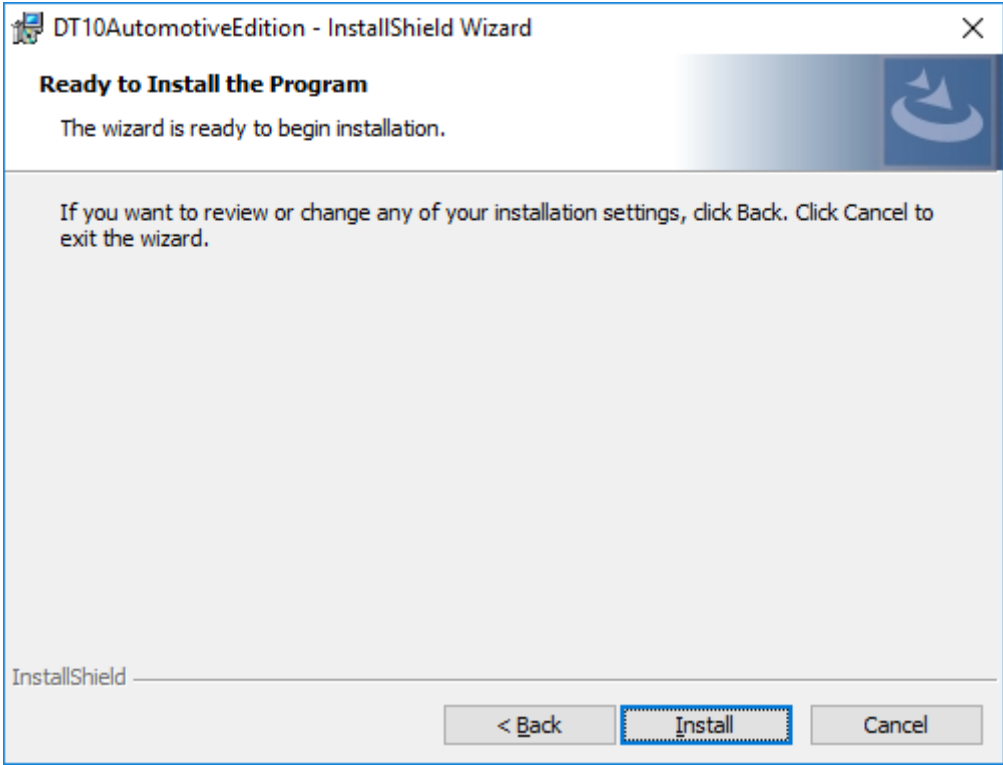
The default destination folder specified is “[Program Files Path]HeartLandData\DT10AE”.

The [Program Files Path] depends on the PC (driver name of the booted OS and so on).

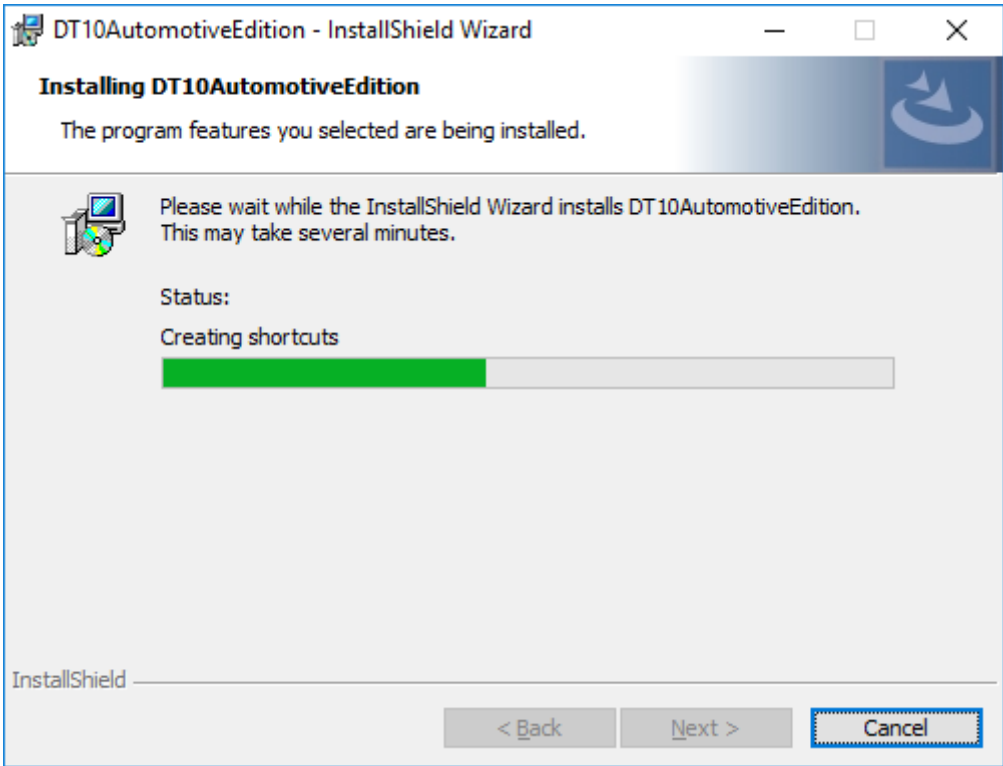
If you wish to change the specified folder, click the “Change” button and specify the folder.

After you have confirmed the installation folder, click the “Next” button.

The “Ready to Install the Program” view is displayed.

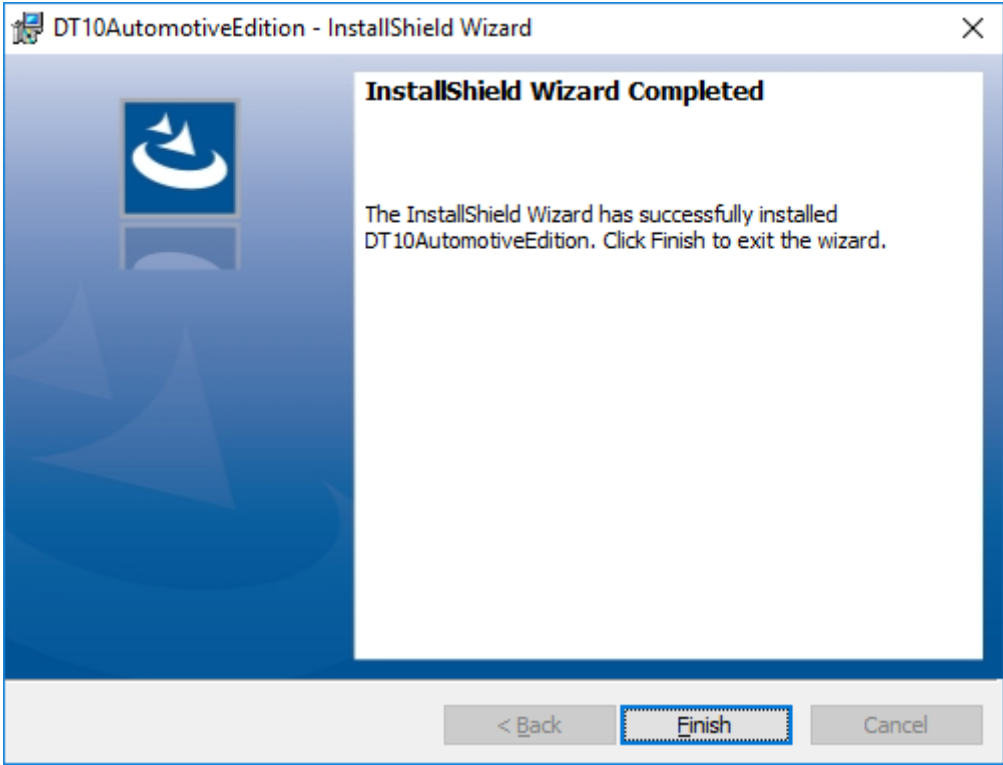


If you wish to install it with the current setup, click the “Install” button.



The installation time depends on your PC environment. It may range from a few seconds to a few minutes.

When the DT10AE installation is successfully completed, the following view is displayed:



Click the "Finish" button and the setup is complete.

1.4. Application setup [64bit OS]

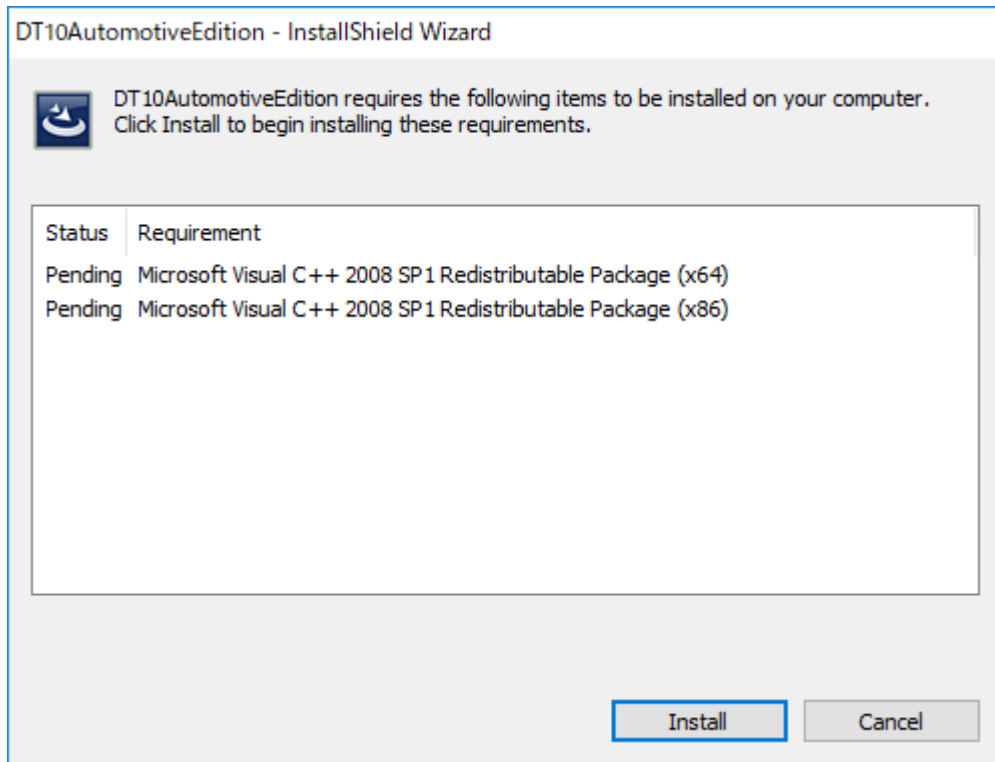
Execute "setup.exe", whereupon the installation of the DT10AE application and required files starts.

Execute the following steps and the setup is completed.

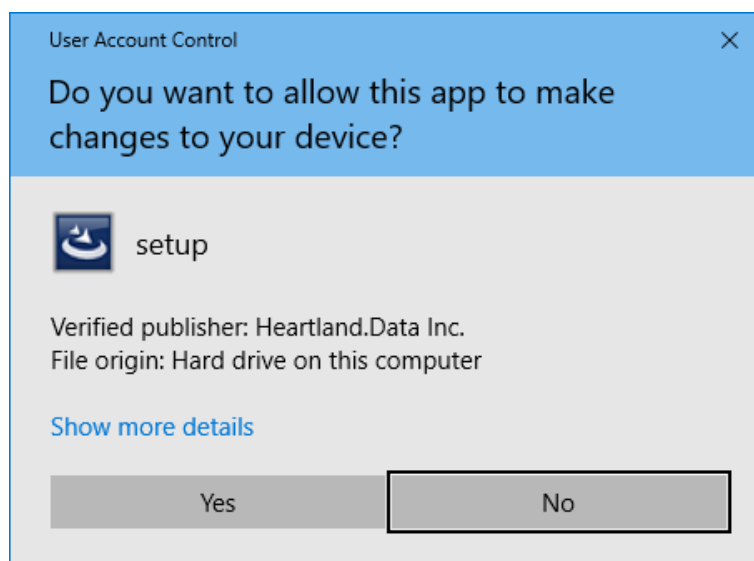
1.4.1. Prerequisite check and installation

When executing "setup.exe", the following window is displayed:

Install "Microsoft Visual C++ 2008 SP1 Redistributable Package(x64)" and "Microsoft Visual C++ 2008 SP1 Redistributable Package(x86)."

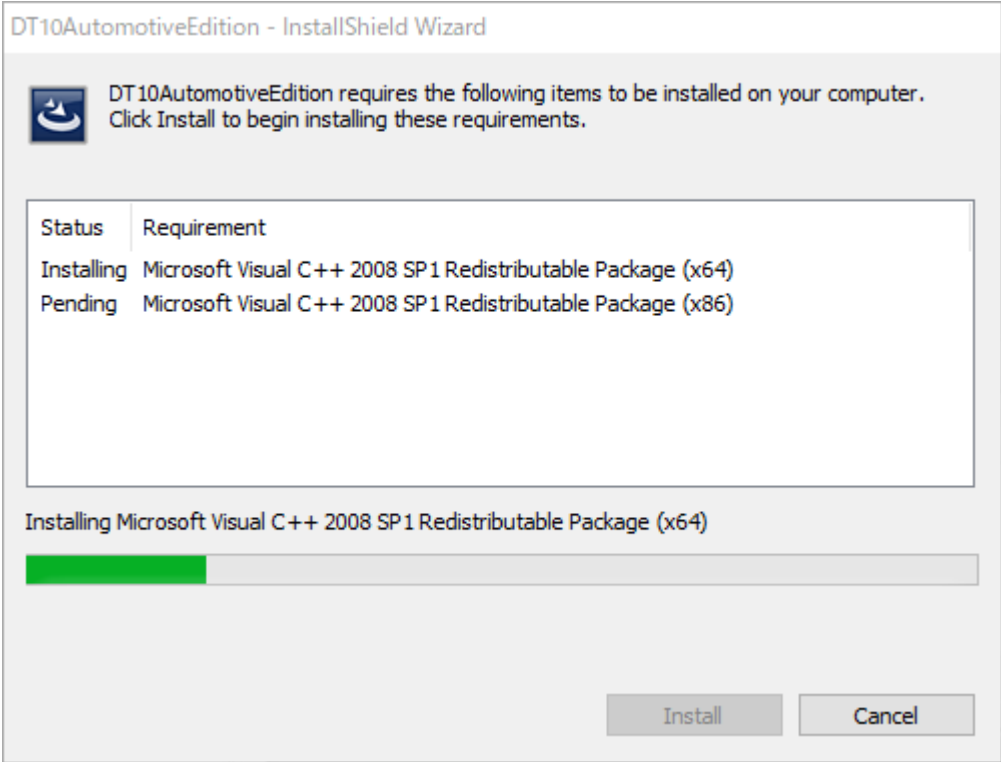


If you click the 'Install' button, 'User Account Control' will be displayed.



Please confirm the 'Verified Publisher' and click the 'Yes', then the installation will get started.

“Microsoft Visual C++ 2008 SP1 Redistributable” is installed.



The installation will take a few minutes and it will be up to the machine situation.

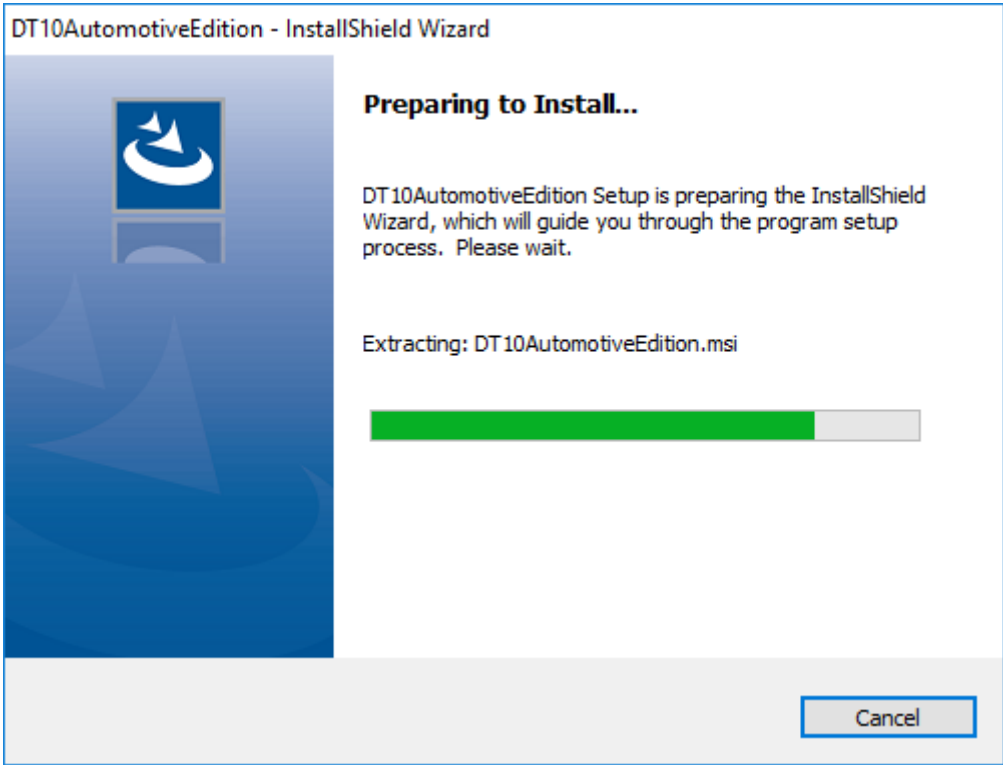
If it is finished, then the installation of DT10AE Application will begin.

You may be recommended to reboot the PC, but please continue installing without rebooting it.

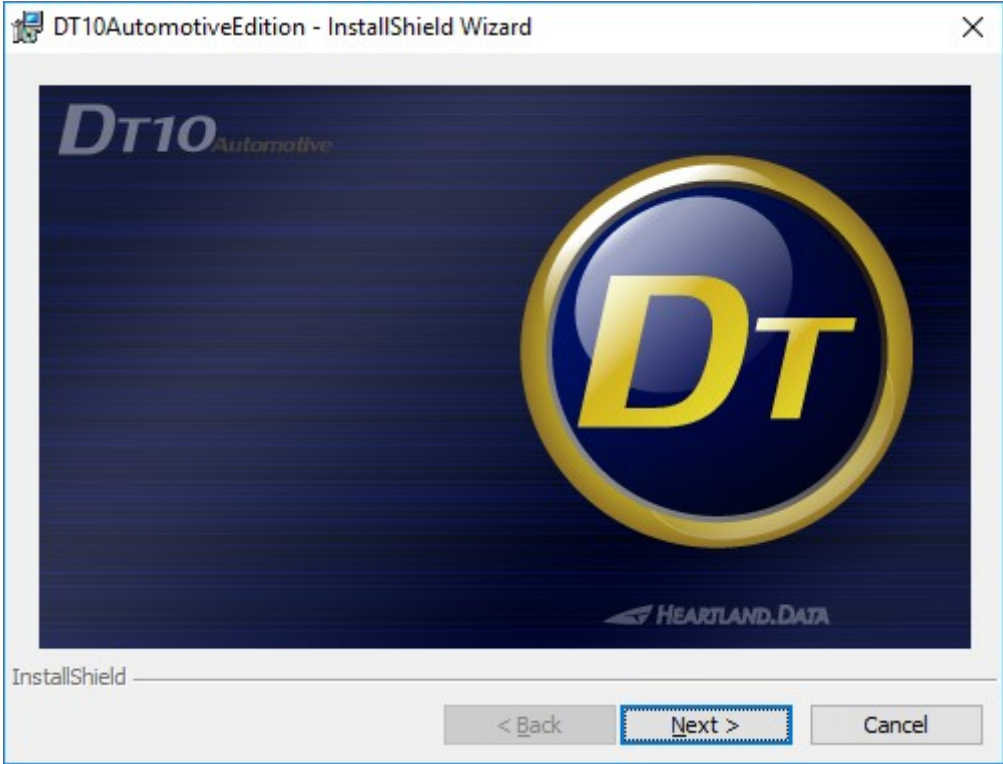
When the installation and setup of the DT10AE are complete, reboot it manually.

1.4.2. Installation of application and each tool

Start the DT10AE setup, and the setup file is expanded.

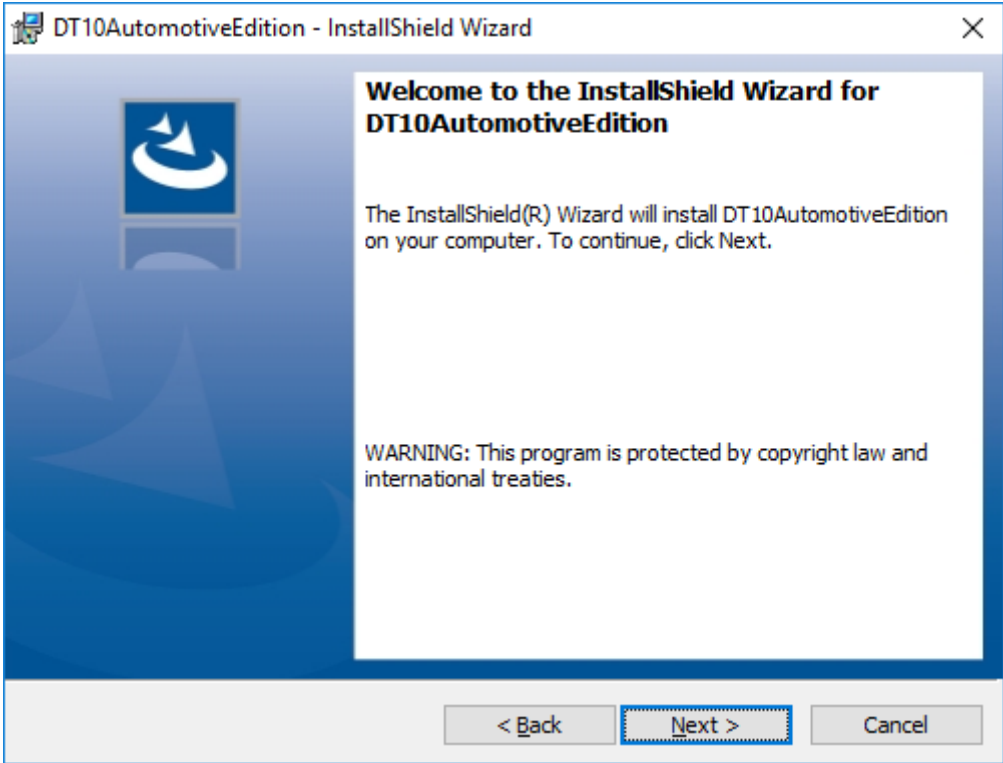


Then the expansion is complete, installation is ready and the splash view is displayed.



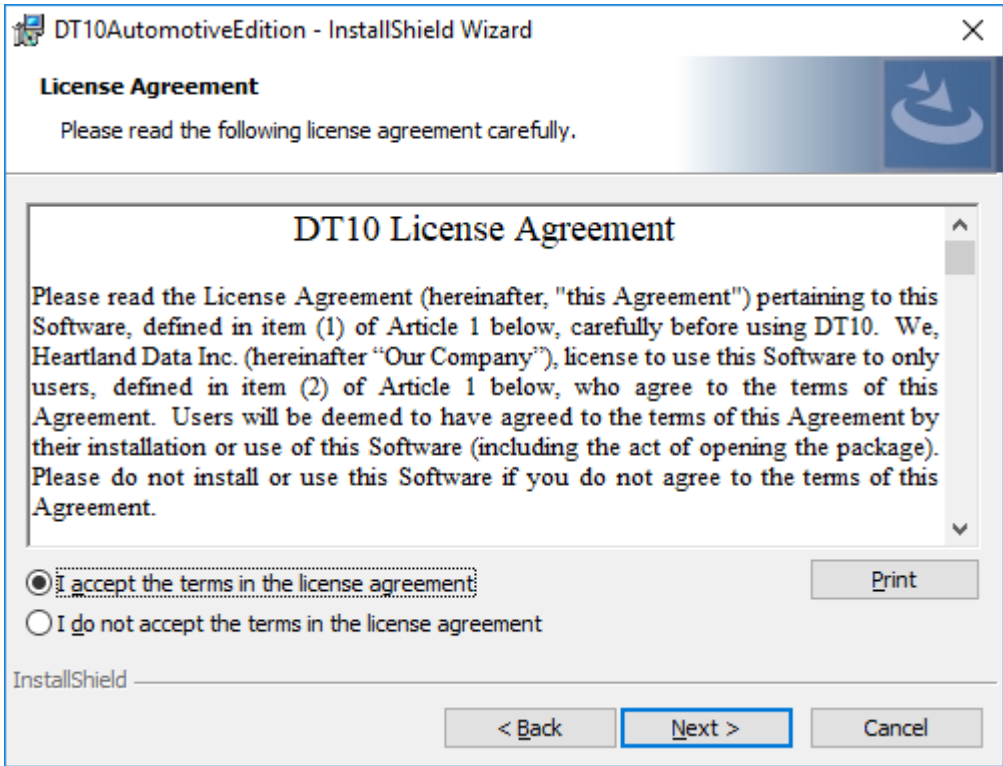
Click the "Next" button.

The welcome view is displayed.



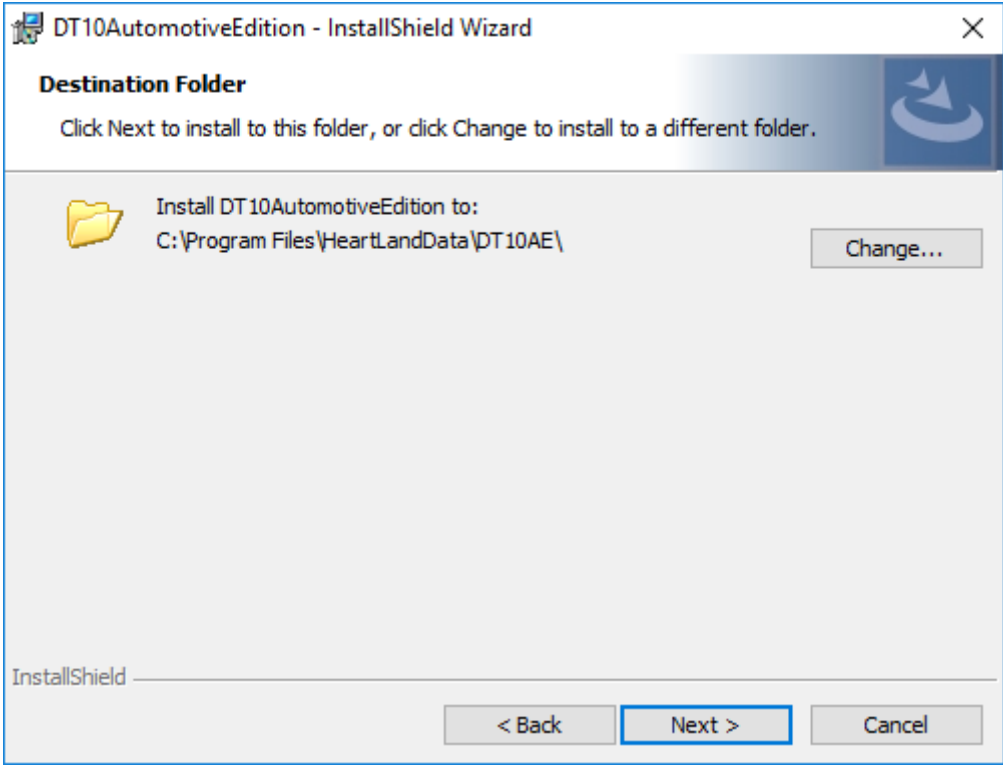
Click the "Next" button.

License Agreement is displayed.



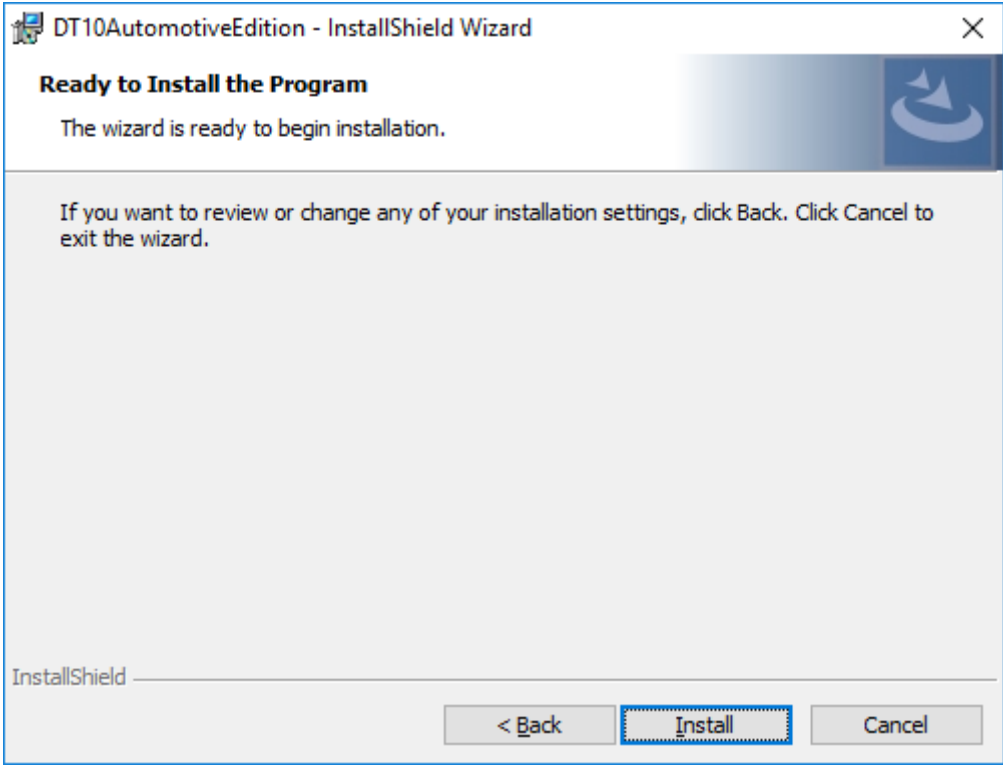
Please confirm the content and select "I accept the terms in the license agreement". Then Click "Next".

The “Destination Folder” view is displayed.

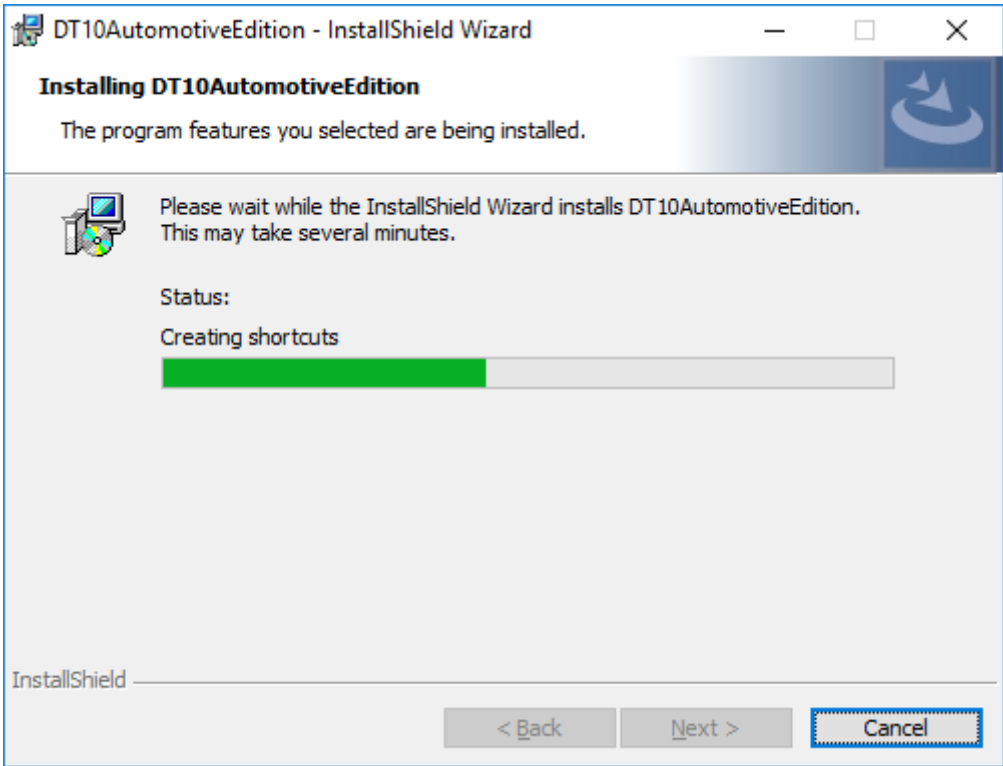


The default destination folder specified is “[Program Files (x86) Path]HeartLandData\DT10AE”. [Program Files (x86) Path] depends on the PC (driver name of the booted OS and so on). If you wish to change the specified folder, click the “Change” button and specify the folder. After you have confirmed the installation folder, click the “Next” button.

The “Ready to Install the Program” view is displayed.

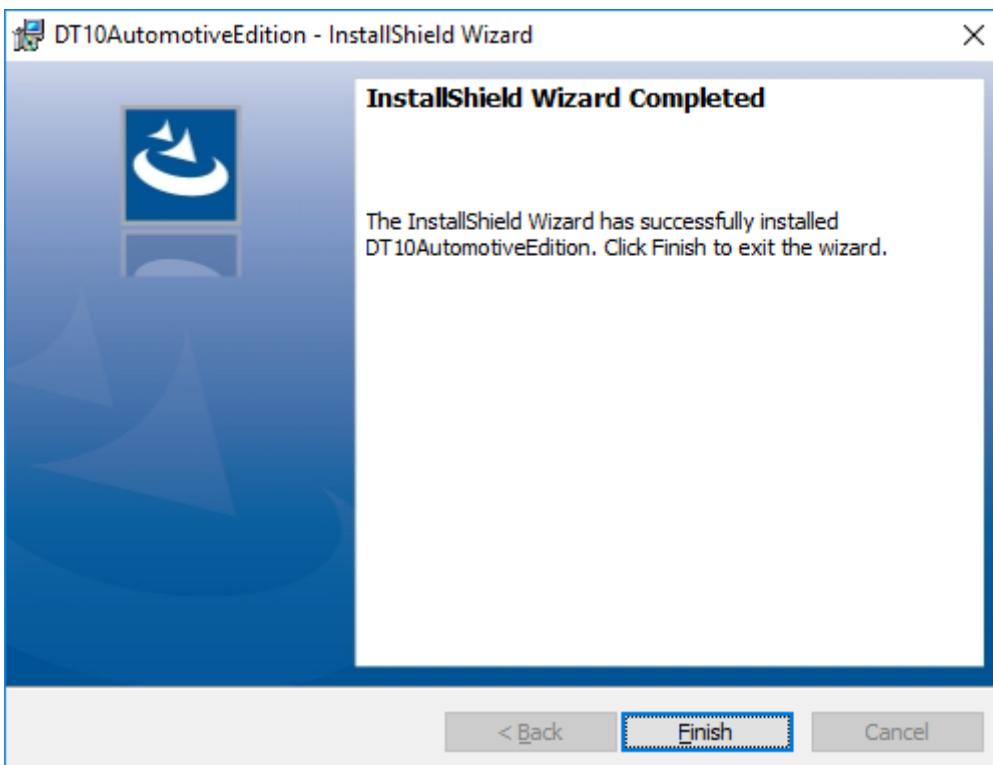


If you wish to install it with the current setup, click the “Install” button.



The installation time depends on your PC environment. It may range from a few seconds to a few minutes.

When the DT10 installation is successfully completed, the following view is displayed:




Click the "Finish" button and the setup is complete.

1.5. Setup of the USB driver of DynamicTracer

USB setup of DynamicTracer is needed.

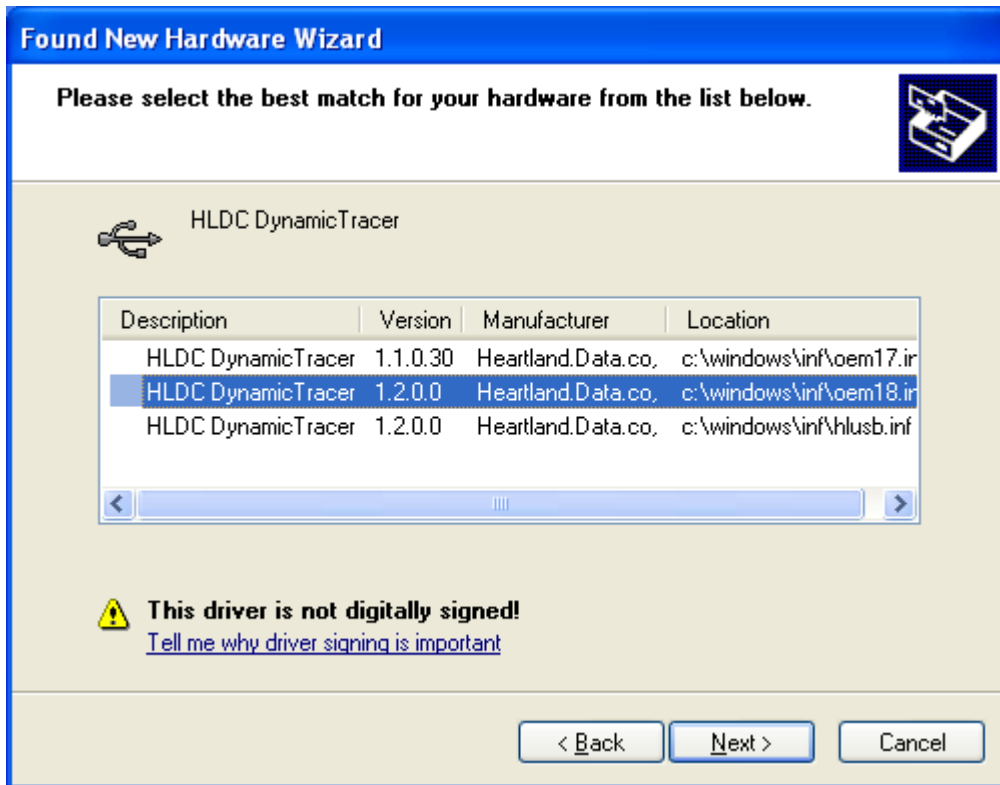
Connect the DynamicTracer to the PC and switch it on, then USB device driver is installed automatically via Windows Update.

 Caution	<p>In Windows8 or 8.1 and Windows10, if the machine does not connect to the network, or the setting is not to install Windows update automatically, the installation is needed manually. Please refer to [1.6. Troubleshooting for the installation] for more details.</p>
---	--

1.6. Troubleshooting for the installation

<< Caution for USB driver setup of the DynamicTracer >>

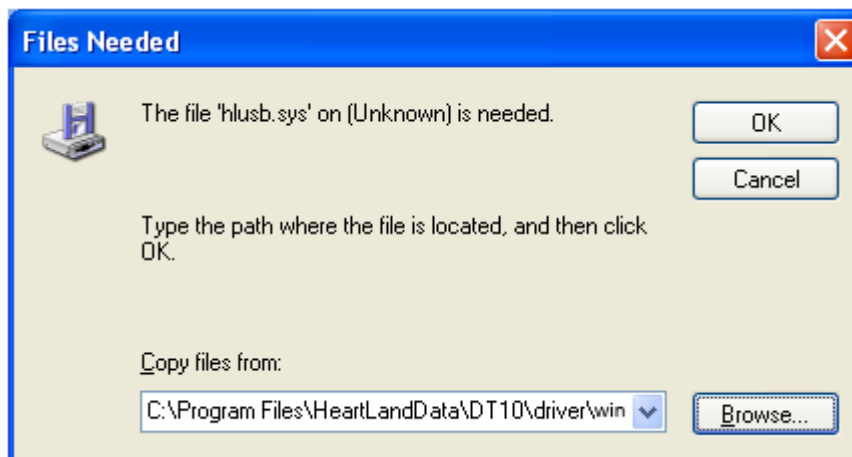
When the USB driver of the DynamicTracer has already been set up, if you attempt to set up the driver again, the following view may be displayed when searching for the driver:



The displayed contents depend on the PC state.

When this view is displayed, select "hlsusb.inf". (* In the case of Windows 8 / 8.1, please select "cyusb.inf".)

The following view may be displayed when installing the driver:



Click the "Browse" button and specify the file for the each OS in "driver" folder in the DT10 install folder.

<< Failure to install “Microsoft Visual C++ 2008 Redistributable.” >>

If an error occurs before the application setup, or when booting up DT10, the installation of “Microsoft Visual C++ 2008 Redistributable.” may have failed.

Please execute the installer of “Microsoft Visual C++ 2008 Redistributable” directly.

The installer is “ISSetupPrerequisites\vc\credist_x86.exe.”

If the installer does not work, your “vc\credist_x86.exe” may have a problem.

Please download “Microsoft Visual C++ 2008 Redistributable (x86)” from the following URL and try to execute it:

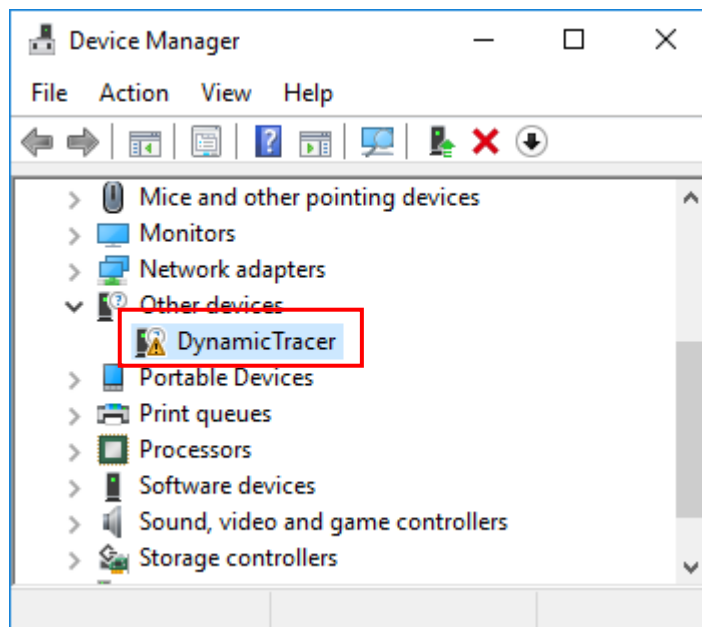
<http://www.microsoft.com/downloads/details.aspx?familyid=A5C84275-3B97-4AB7-A40D-3802B2AF5FC2&displaylang=en>

<< Installation of the USB device driver may not automatically execute >>

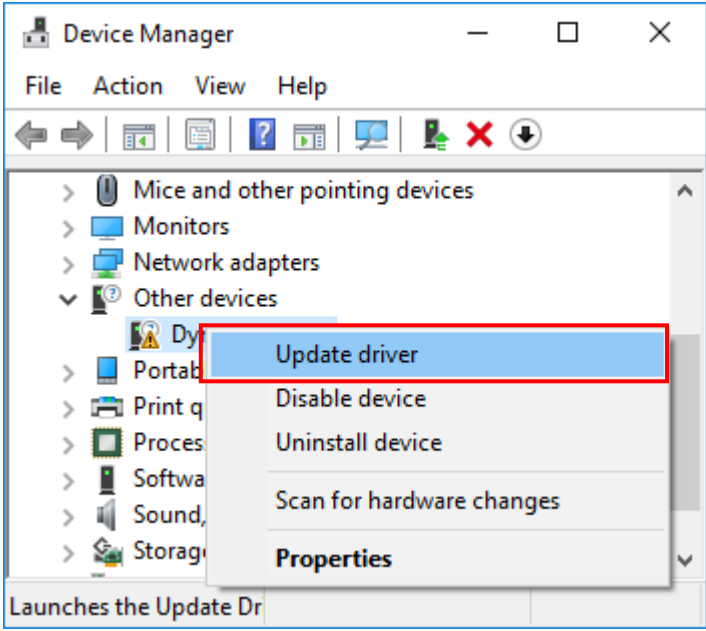
In Windows 7, if you connect the DynamicTracer to a PC and turn it on, the USB device driver is not automatically installed and must be installed manually.

The next steps show you how to do this:

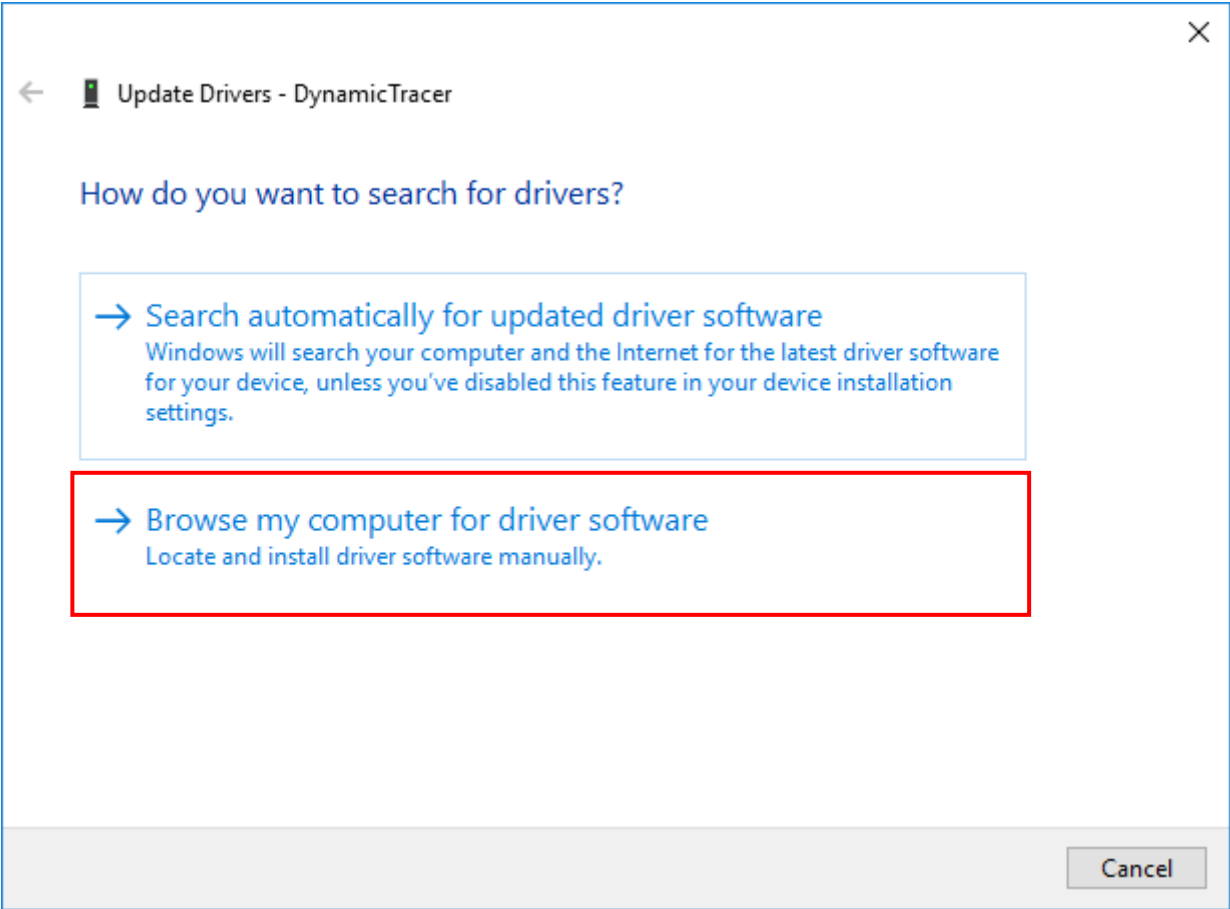
1. Open the [Device Manager] in the Control Panel.
2. Find the [DynamicTracer] device in the Device Manager.



3. Right-click on the [DynamicTracer] device and click on "Update Driver Software" from the displayed menu.



4. Select "Browse my computer for driver software" from the "Update Driver Software" dialog.



5. Click the “Browse” button to specify the [driver] folder in the DT10AE install folder as the search target.

Windows7 (32bit) : C:\Program Files\HeartLandData\DT10AE\driver\win7\x86

Windows7 (64bit) : C:\Program Files (x86)\HeartLandData\DT10AE\driver\win7\x64

Windows8 (32bit) : C:\Program Files\HeartLandData\DT10AE\driver\win8\x86

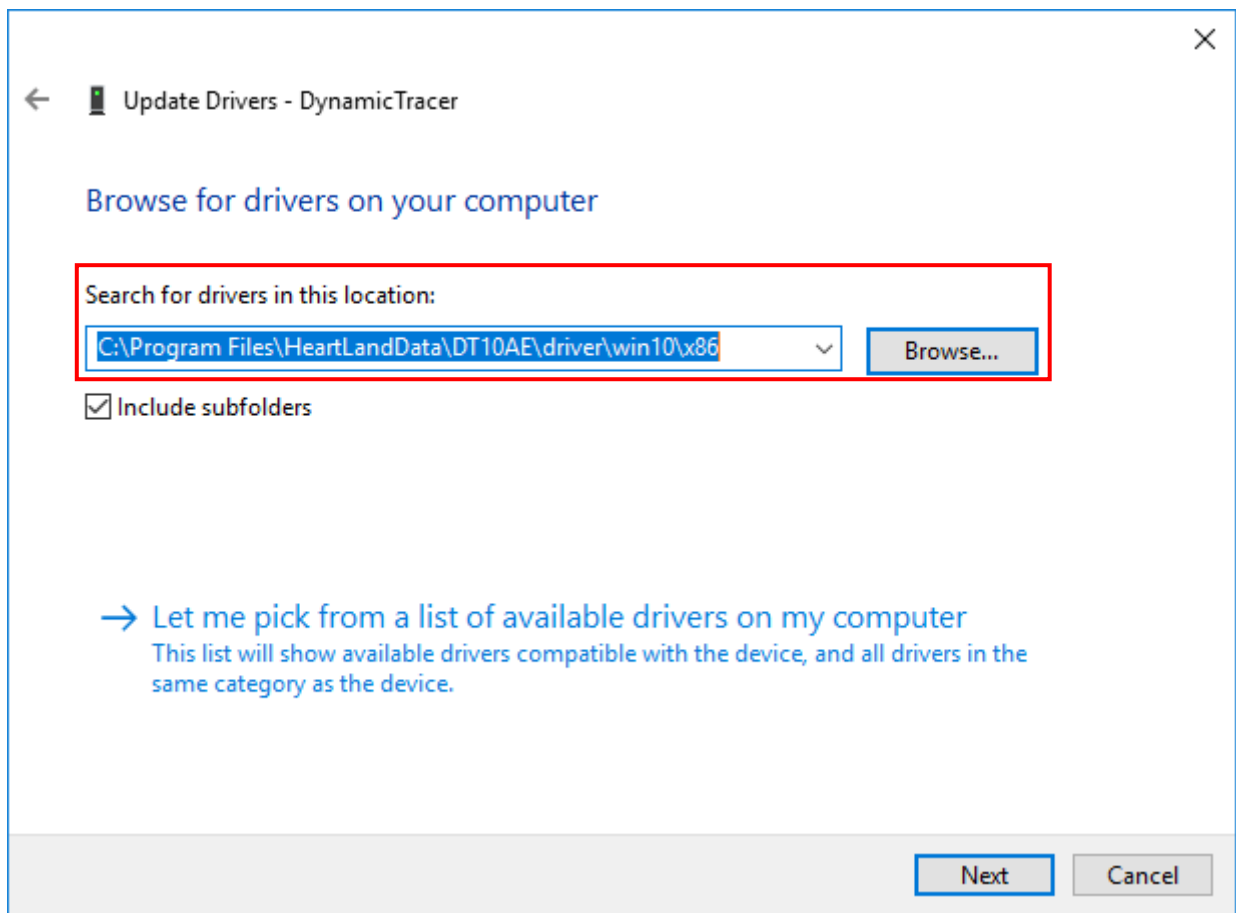
Windows8 (64bit) : C:\Program Files (x86)\HeartLandData\DT10AE\driver\win8\x64

Windows8.1 (32bit) : C:\Program Files\HeartLandData\DT10AE\driver\win8.1\x86

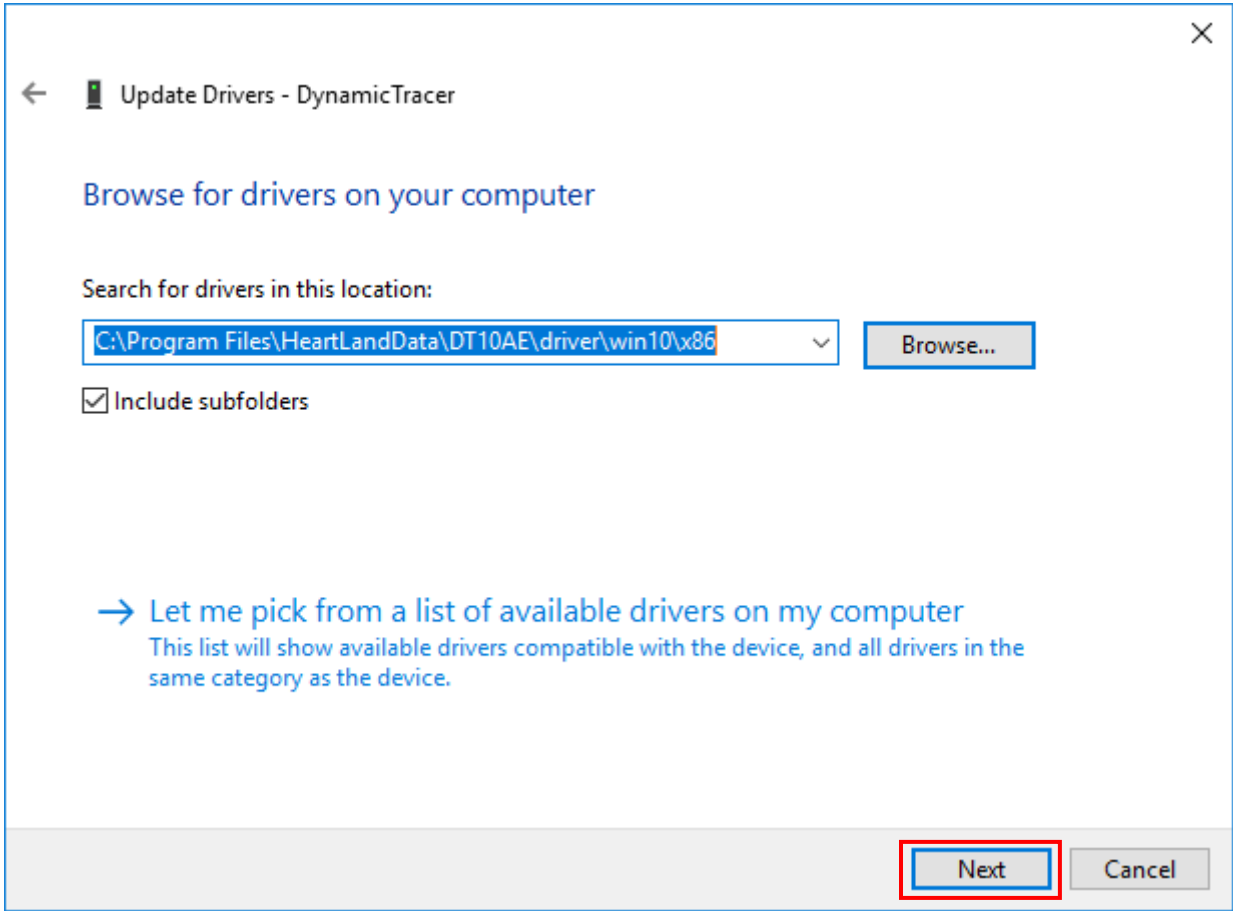
Windows8.1 (64bit) : C:\Program Files (x86)\HeartLandData\DT10AE\driver\win8.1\x64

Windows10 (32bit) : C:\Program Files\HeartLandData\DT10AE\driver\win10\x86

Windows10 (64bit) : C:\Program Files (x86)\HeartLandData\DT10AE\driver\win10\x64

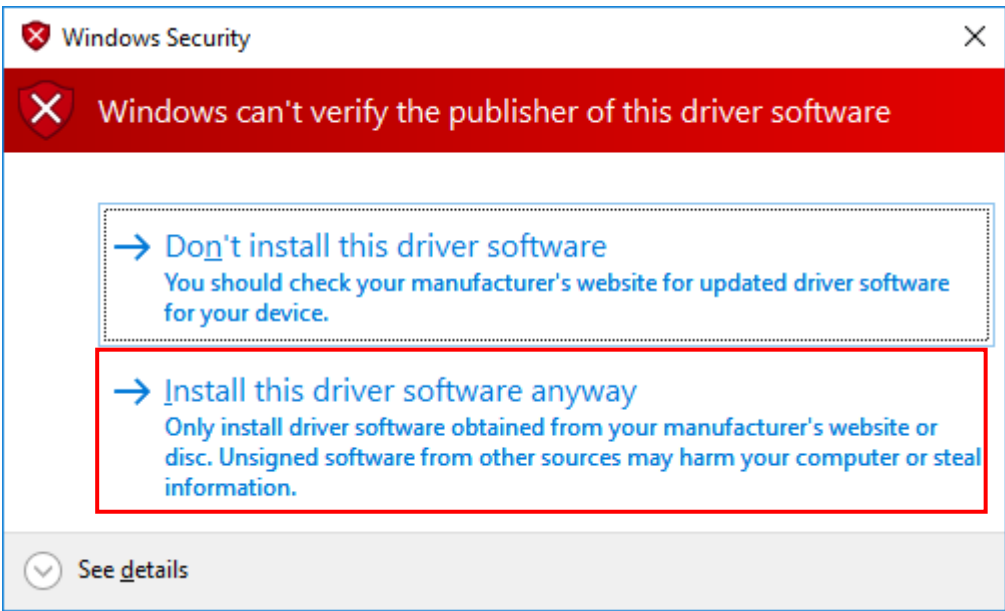


6. Click the "Next" button.

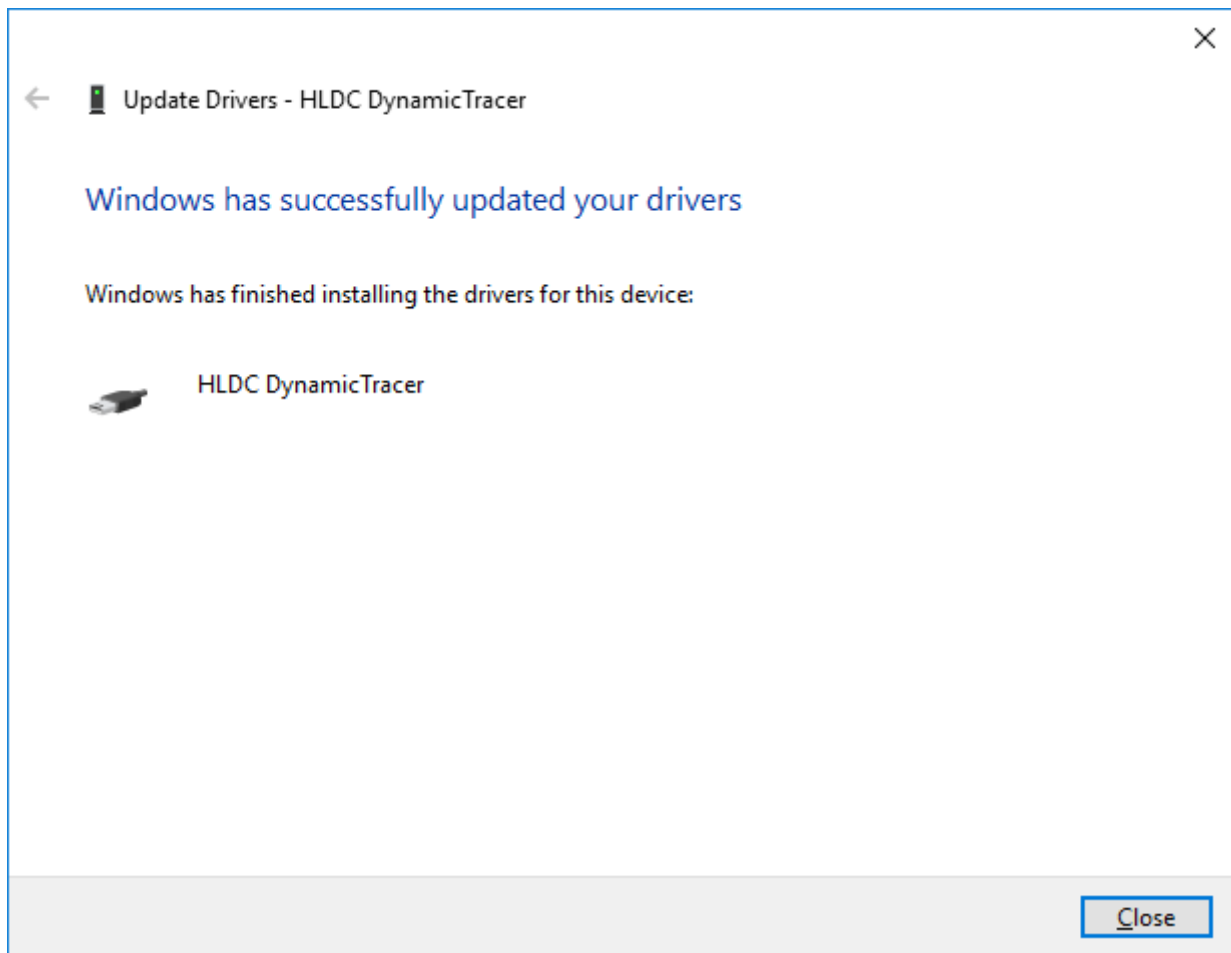


7. The USB driver installation starts.

8. If a warning like the following is displayed, select "Install this driver software anyway."



9. The following view is displayed when the driver installation is complete:



10. Click the "Close" button to end the installation step.

<< If the DT10 still does not work >>

Check with another PC.

If the DT10 still does not work, please contact our support department:

Heartland.Data Inc.

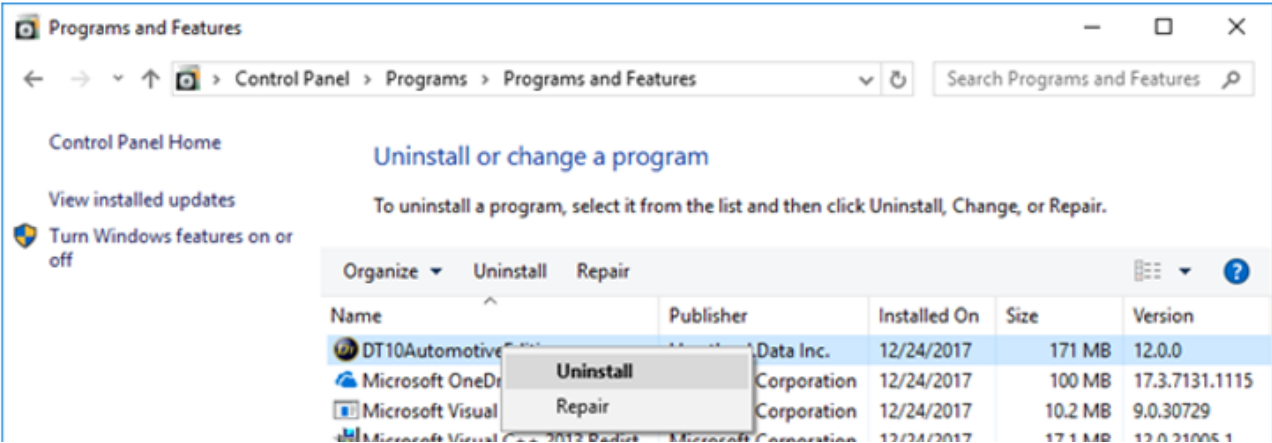
User Support

URL: heartlanddata.com

1.7. Uninstallation of DT10 Automotive Edition

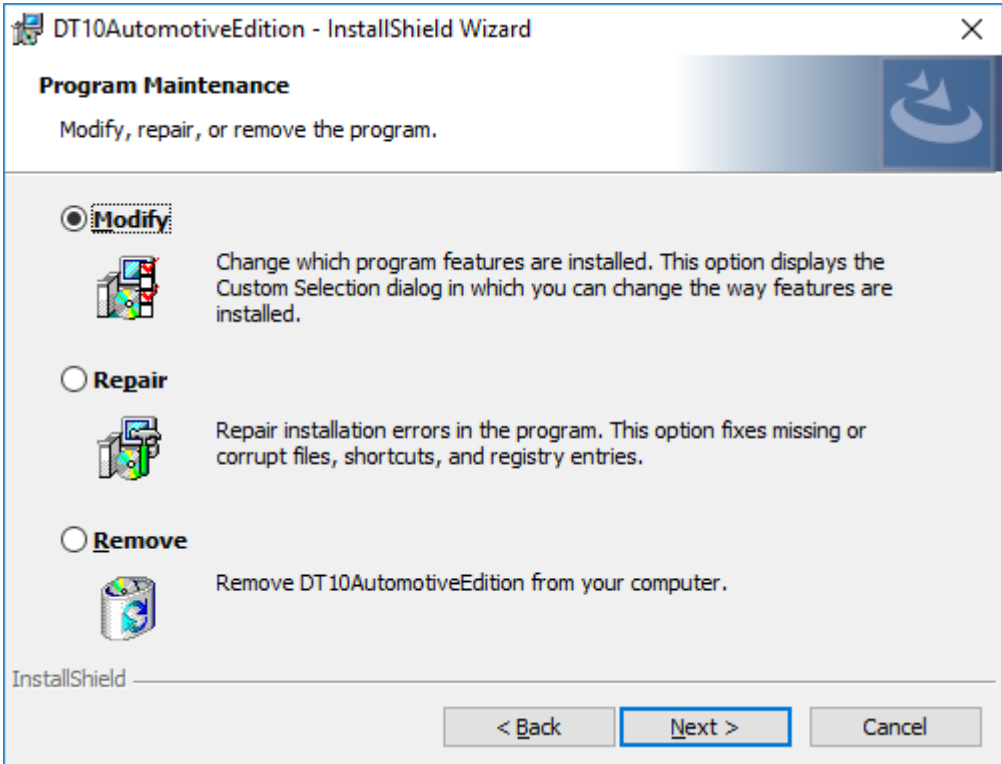
1.7.1. Uninstall by “Add or Remove Programs”

Select “DT10 Automotive Edition” from “Control Panel” ->“Add or Remove Programs”, and delete it.
Proceed in this way to uninstall DT10 applications up to Ver.1.52.



1.7.2. Uninstall by “setup.exe”

Use “setup.exe” that can be used to install or uninstall DT10.



“Program Maintenance” view is displayed and then select “Remove” to uninstall DT10.

2. Setup for Nodelock License

2.1. Setup for nodelock license

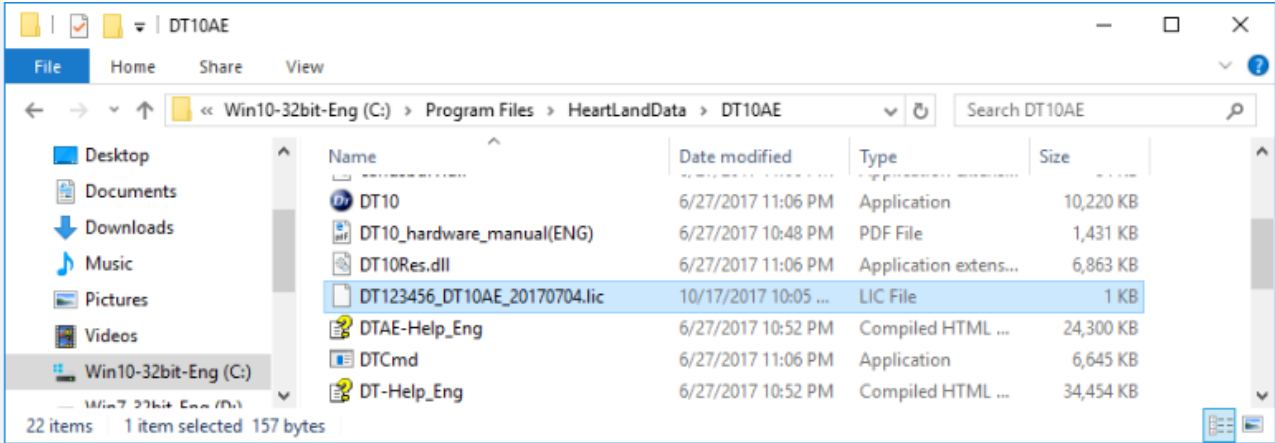
A **nodelock license file** for the specific machine is needed to use the application.

Nodelock license has 2 kinds of license; one is for DT10(*.lic) and the another one is for the source code structure analysis engine(locallicense.dat).

- 1. Please put the DT10 license file(*.lic) in the installation folder of DT10.exe.

The installation folder is "[Program Files Path]HeartLandData¥DT10AE" in the default setting.

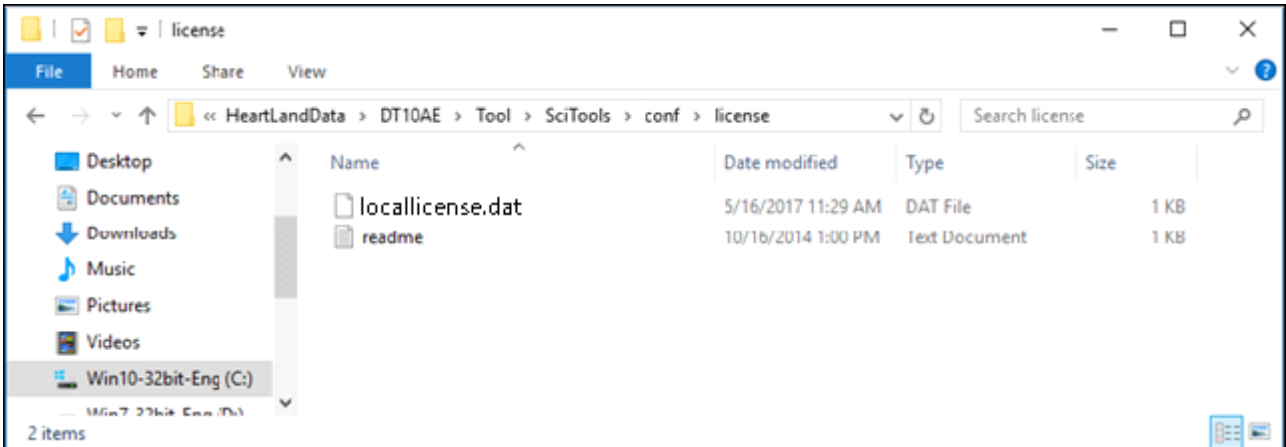
* [Program Files Path] depends on the machine (Drive name of the boot OS and so on).




- 2. Please put the license file for the source code structure analysis engine(locallicense.dat) in the following folder.

The installation folder is "[Program Files Path]HeartLandData¥DT10AE" in the default setting.

* [Program Files Path] depends on the machine (Drive name of the boot OS and so on).



3. After putting the license files to the folder, please start DT10 application.
And the activation is completed if the application starts as "Automotive Edition".

 Caution	<p>The license file is for the only machine that preferred to our support. Please contact us when the republication of the license file is needed because the machine is replaced, the machine has broken, and some reason.</p>
	<p>The application is NOT available via terminal services like "Remote dektop connection" of Windows.</p>
	<p>Please delete the expired license file from the folder.</p>
	<p>The nodelock license might NOT work incorrectly in case the application does not start as "Automotive Edition". Please refer to [2.3 Troubleshooting of nodelock license] for more details.</p>

2.2. License update

Save the new DT10 nodelock license(*.lic) in the save folder of the old one(*.lic).

Please ensure to delete the old one. If it leaves, the new one is NOT validated.

*The license file for source code structure analysis engine(locallicense.dat) is not necessary to be updated.

2.3. Troubleshooting of nodelock license

<< The application starts as “Free Edition” >>

DT10 starts as “Free Edition” if the license is invalid.

The license is NOT valid in the following cases.

- **The save folder of the license file is incorrect**

-> Please ensure that the file is saved in the installation folder of DT10 application.

- **The expired license file is NOT deleted**

-> Please delete the expired one.

- **MAC address that preferred to our support is incorrect**

-> Please ensure that the MAC address of the machine is same to the one that preferred us.

Please refer to [2.4 Confirmation of the unique information of the machine] for the details to confirm the Address

2.4. Confirmation of the unique information of the machine

[Windows]

1. Please execute "ipconfig/all" command in the command prompt.
2. In the result, physical address is MAC address, and IPv4 address is IP address.

Example > ipconfig/all

```
Host name . . . . . : Server (Host name)
-
Physical address . . . . . : 00-12-34-AB-CD-E5 (MAC address)
-
IPv4 address . . . . . : 192.168.###.### (IP address)
```

[Linux]

1. Please execute "hostname" command from the terminal and confirm the host name.
2. Also, please execute "/sbin/ifconfig eth0" command and confirm the result.

In the result, physical address is MAC address, and IPv4 address is IP address.

"Hwaddr" is MAC address, and "inet addr" is IP address.

Example : \$hostname

```
"Server (Host name)"
```

```
$/sbin/ifconfig eth0
```

```
eth0 Link encap:Ethernet HWaddr 00:12:34:AB:CD:E5 (MAC address)
inet addr:192.168.###.### (IP address)
```


3. Setup of floating license

3.1. Setup of Windows server

License server machine is required in case floating license system is used.

This chapter explains the preparation to install the service "DTTestPointBuilderLicenseManager" required to use as license server and the way to install.

3.1.1. System Requirements

OS :


- Windows7
 - Windows8
 - Windows8.1
 - Windows10
- * Supports both 64 and 32 bit versions.

Server OS :

- Windows Server 2008
 - Windows Server 2012
 - Windows Server 2016
- * Supports both 64 and 32 bit versions.

Computer main body :

- A personal computer equipped with a processor superior to Pentium 100 MHz or equivalent is recommended.
- Free space of 5 MB or more is recommended in the memory.
- Free space of 10 MB or more is necessary in a hard disc

 Caution	<p>Installation requires the user of an administrator.</p> <p>Install as an administrator.</p>
	<p>Operation at a virtualized environment (Hyper-V) is not assured.</p>
	<p>To use it via Terminal Services connection such as Windows Remote Desktop Connection, you need a license for Remote Desktop.</p> <p>Please contact your sales representative if you have any questions about license change or purchase.</p>

3.1.2. Confirmations before the installation

Please confirm the following 3 points about a PC to install DTTTestPointBuilderLicenseManager.

- 2 ports from 27000 to 27009 for DT10AE application can be opened.
2 ports are used the ports from 27000 to 27009 for the license server.


- Port of 9001 for the source code structure analysis engine can be opened.
Please allow to communicate with the UDP port of 9001 because the connection from a client to the license server is blocked in case firewall is used on the network.

- PC can restart.
PC restart is required after completing the installation.

- Please uninstall DTLicenseManager of DT series by the following steps if it has been used before.

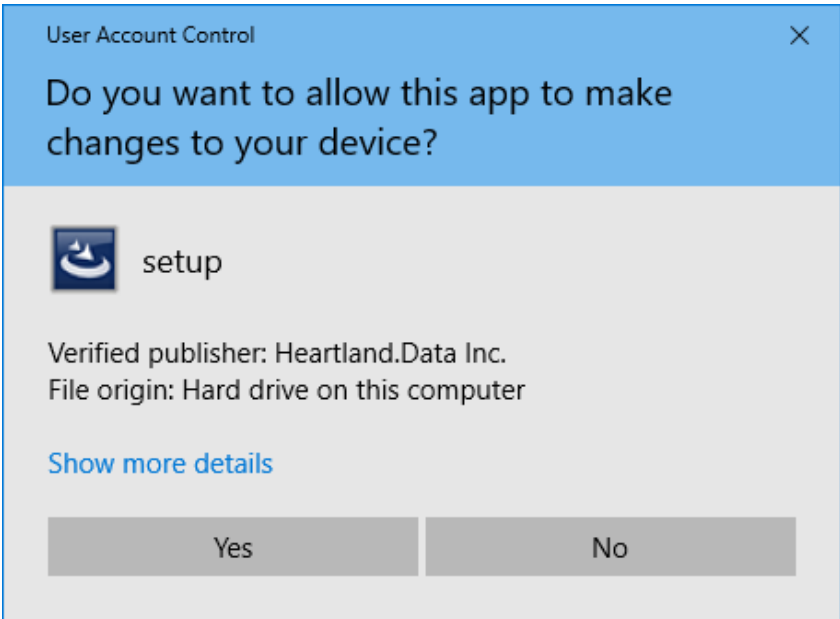
1. Uninstall DTLicenseManager from "Programs and Features" in "Control Panel".

3.1.3. Installation of license manager

 Caution	<p>If you have already installed DT10's LicenseManager, be sure to uninstall it before installing DT10AE's LicenseManager.</p>
---	--

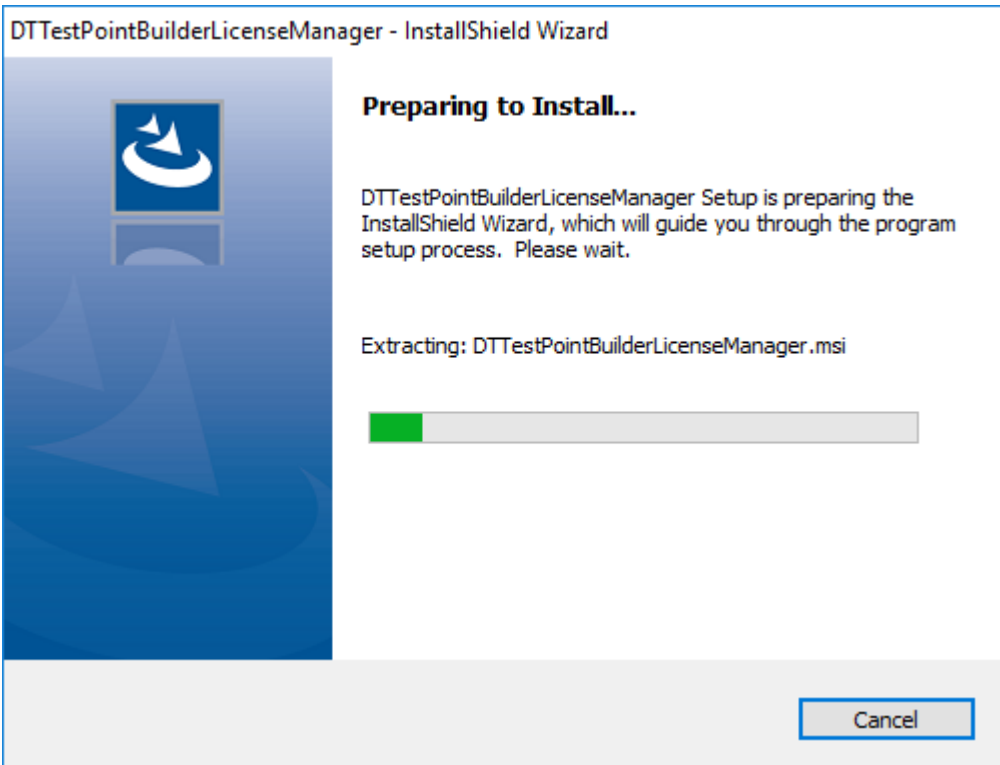
Execute "Setup.exe" in the installation disc.

"User Account Control" is displayed when starting the setup of DTTTestPointBuilderLicenseManager.

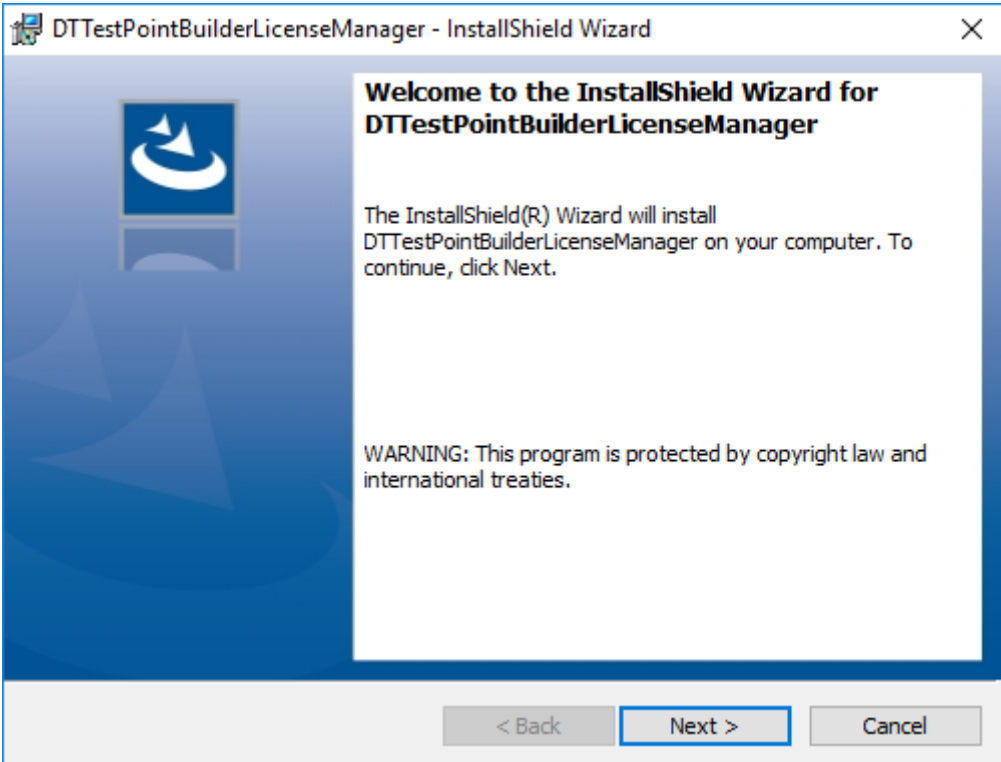


Select "Yes" after confirming the verified publisher.

Setup files are extracted automatically.

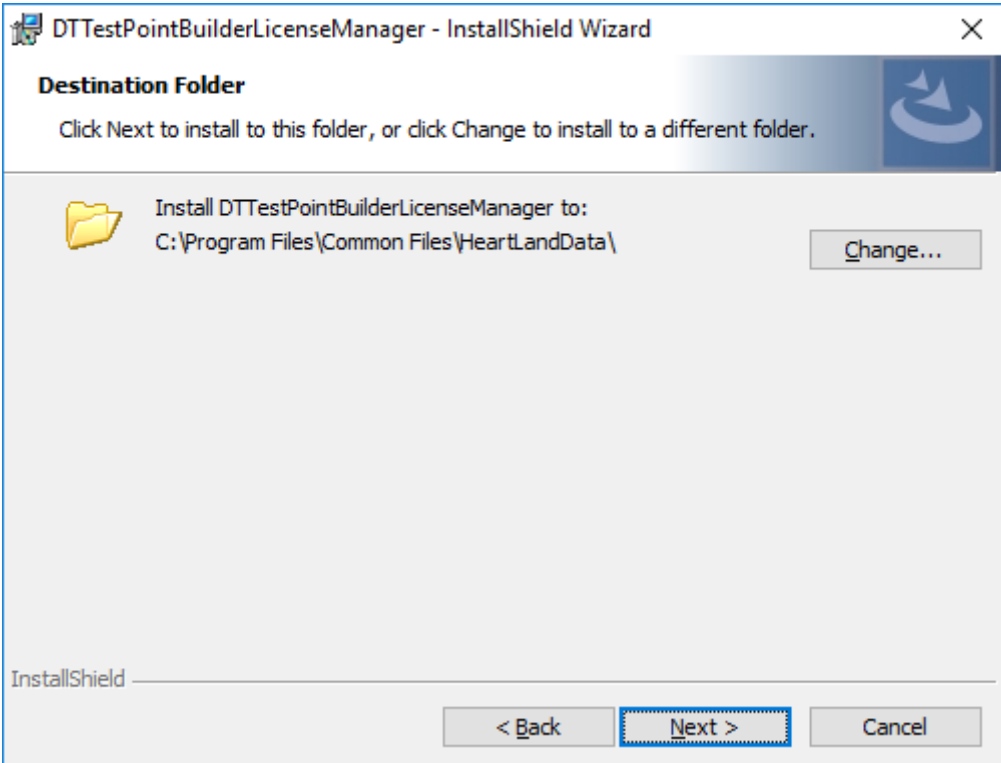


"Welcome" message is displayed after the extraction and the installation preparation is completed.



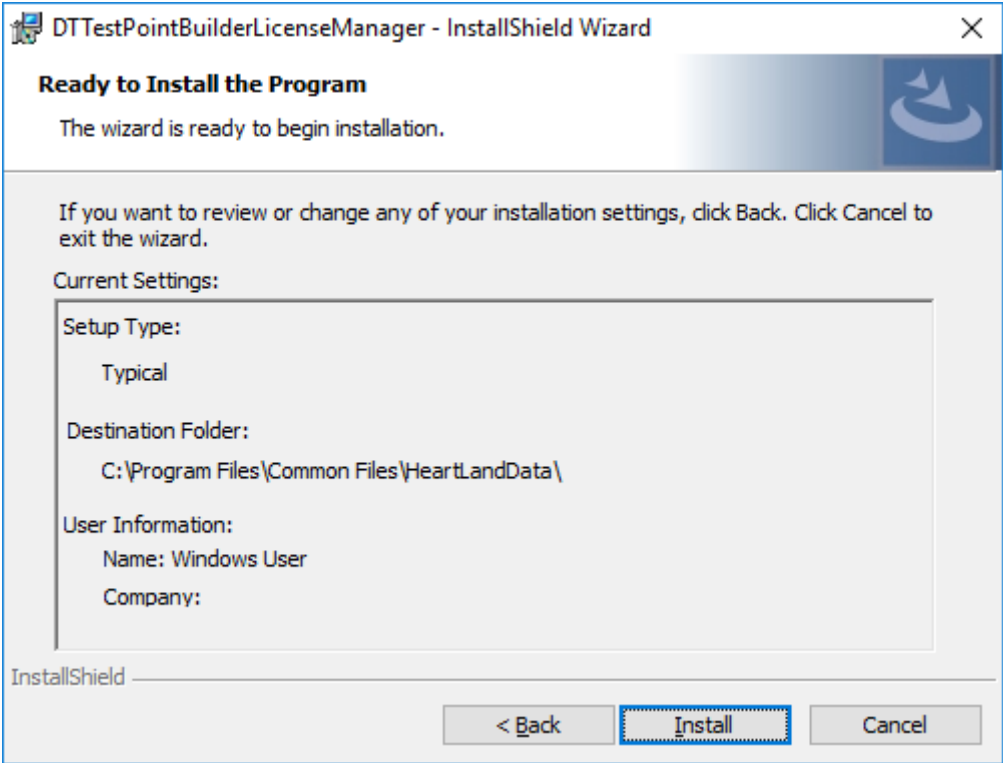
Click "Next".

This is displayed to select an installation folder.

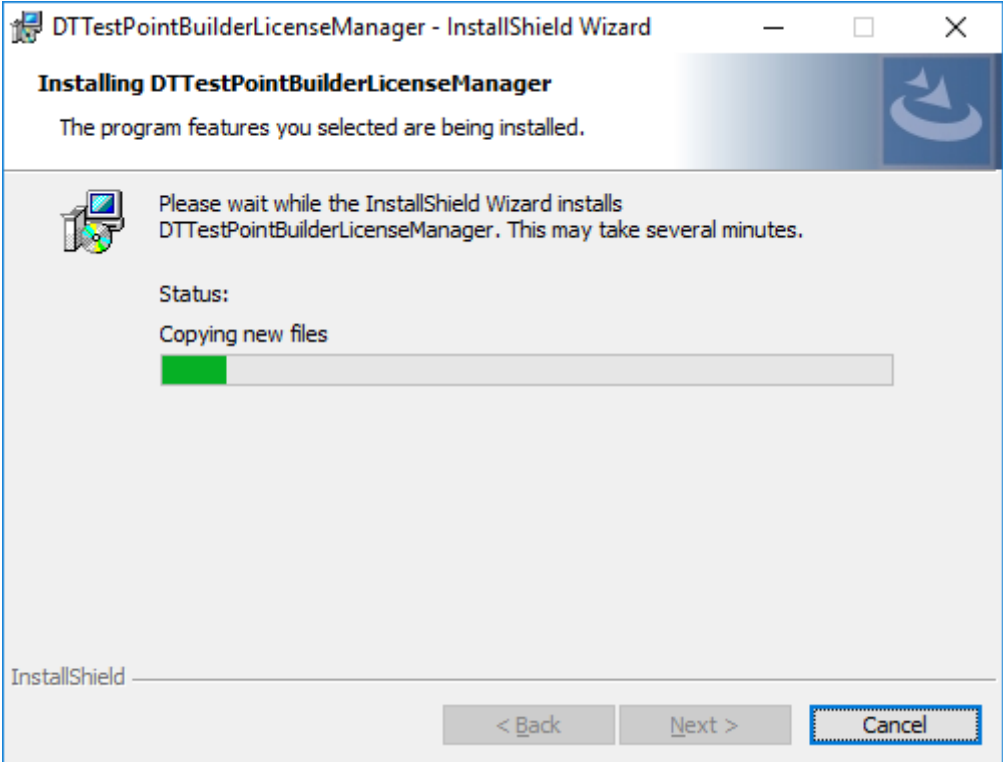


The installation folder is "[Common Files Path]HeartLandData" in the default setting. [Common Files Path] depends on the machine (Drive name of boot drive). Click "Change" and select other folder in case the folder is changed. Please click "Next" after the folder is selected.

"Ready to Install the Program" is displayed.

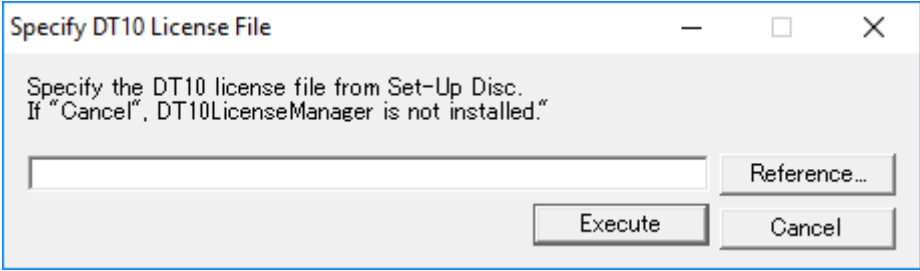


Click "Install" to start the installation by the contents of the settings



The installation depends on the machine condition. It takes seconds to minutes.

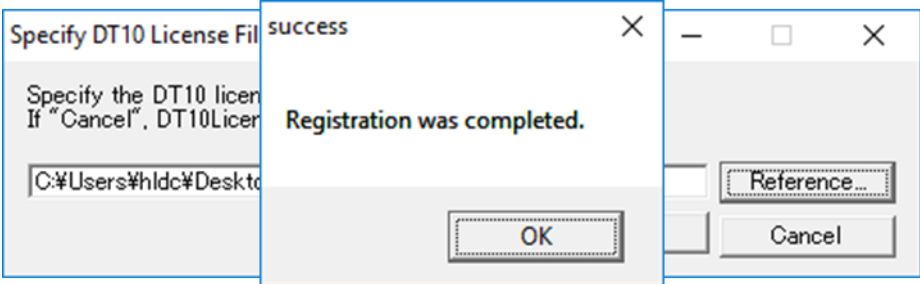
"Specify DT10 License File" dialog box is displayed automatically after the finish of copy status of new files.
This dialog box is always displayed in foreground during the opening.



"Select a License File" dialog box is displayed when "Reference..." button is clicked. Please select a DT10 license file (*.lic) in the following folder attached in an install media.

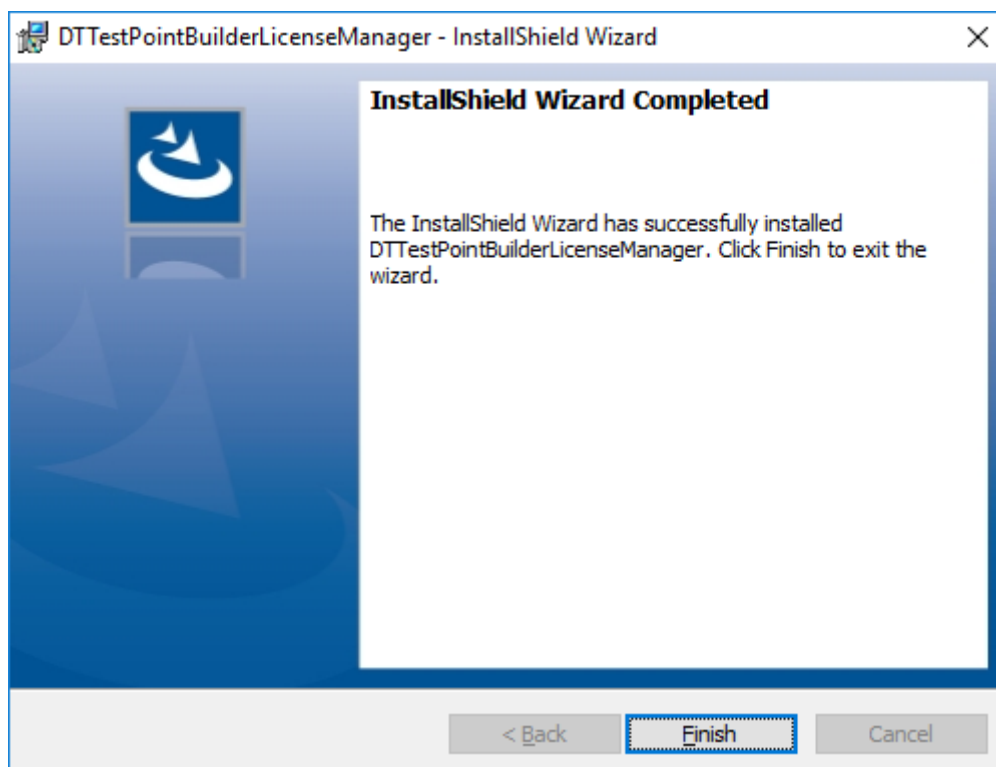
[File path] : "%License%Server" of the CD-ROM

This edit box also can be input directly.
Click "Execute" button after the confirmation of DT10 license file path in the edit box.



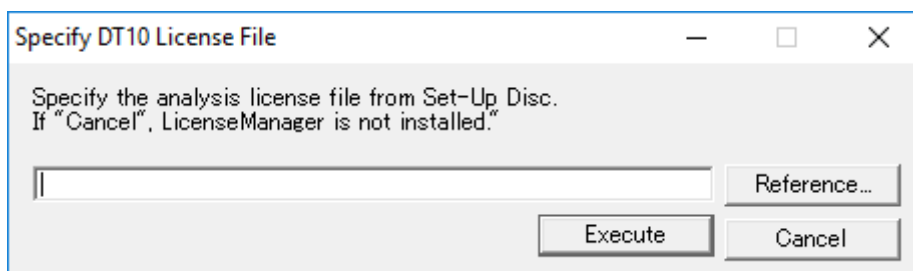
The installation of "DTTestPointBuilderLicenseManager" and the service registration are completed correctly if "success" message is displayed.
Click "OK" button of "success" message.

The following is displayed if "DTTestPointBuilderLicenseManager" is installed correctly.



Click "Finish" button and wait a several ten seconds.

The dialog box to select the license data for the source code structure analysis engine is displayed.



Please select the license data for the source code structure analysis engine(*.dat) in the dialog box.in the following folder attached in an install media.

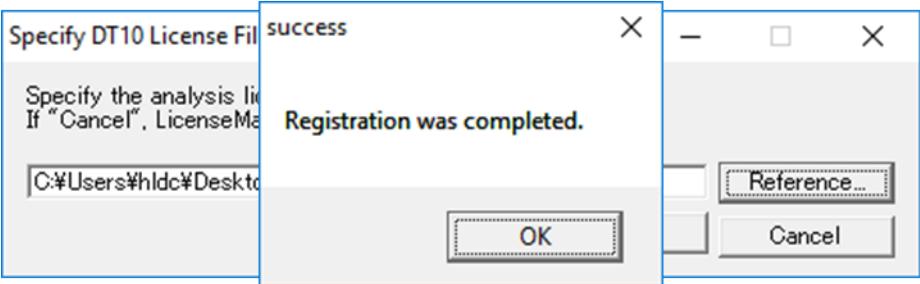
Please select the following license file (license.dat) attached in an install media.

[File path] : "¥License¥Server" of the CD-ROM

After the execution, please wait until the console is closed after it is opened.

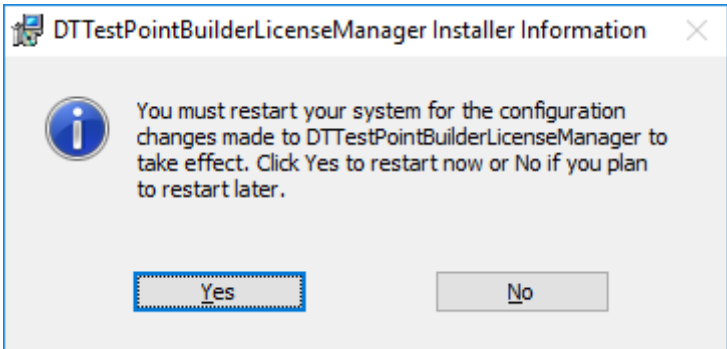
The installation of "DTTestPointBuilderLicenseManager" and the service registration are completed correctly if "success" message is displayed.

Click "OK" button of "success" message.



The message to restart is displayed. Please click "Yes" to restart.

The installation finishes completely if "No" is clicked in this message and automatic restart is not executed. But DTTestPointBuilderLicenseManager service starts automatically after the next start of the machine.



The installation is finished by this step.

3.1.4. Setup of a client PC

This chapter explains the way to setup the client PC executes the application.

First, install the application (DT10) in the client PC.

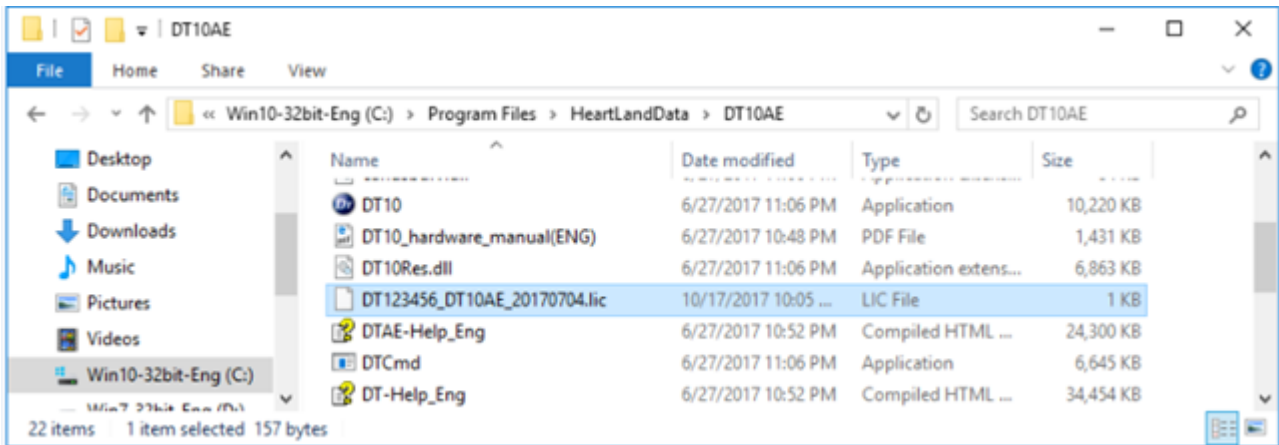
Please refer to [1. Installation of DT10 Automotive Edition] for more details of the installation.

1. Copy the License data file (*.lic) to the installation folder after the installation of the application.

Copy source folder : “¥License¥Client” of the CD-ROM

Copy destination folder : [Program Files Path]HeartLandData¥DT10AE

*[Program Files Path] depends on the machine (Drive name of boot OS and so on)

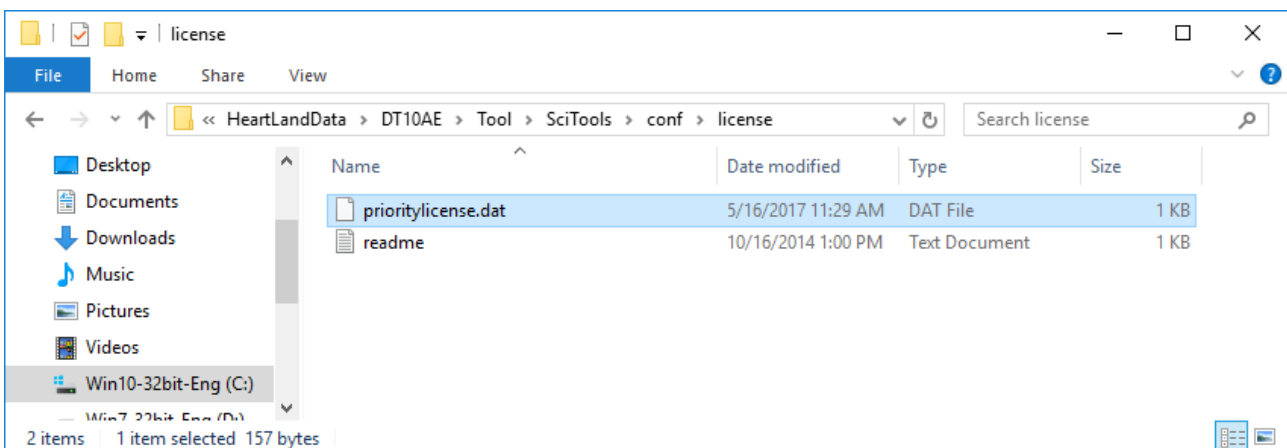


2. Copy the License data file for the source code structure analysis engine (prioritylicense.dat) to the following folder.

Copy source folder : “¥License¥Client” of the CD-ROM

Copy destination folder : [Program Files Path] HeartLandData¥DT10AE¥Tool¥SciTools¥conf¥license

*[Program Files Path] depends on the machine (Drive name of boot OS and so on)



3.1.5. Licensing confirmation

Start the DT10 application on the client PC.

"Automotive Edition" is shown on the upper-right of starting display if the license works correctly.

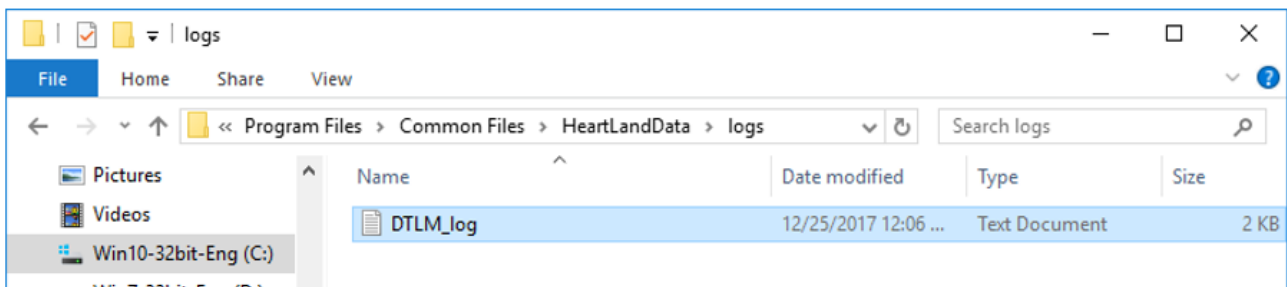
In case the license is invalid or works incorrectly, "Free Edition" is shown.



Moreover, the confirmation also can be from log file created from the server PC.

Open "logs" folder in the installation folder of the license manager.

(The folder place is "%Program Files%Common Files%HeartLandData%logs" of the boot drive in the default setting)



The log file content becomes like [Fig.3.1.5 Confirmation of the log file] if Check-out or Check-in is done correctly from the client machine.

Please refer to [3.5 Troubleshooting for the floating license] if the application can not start as "Automotive Edition".

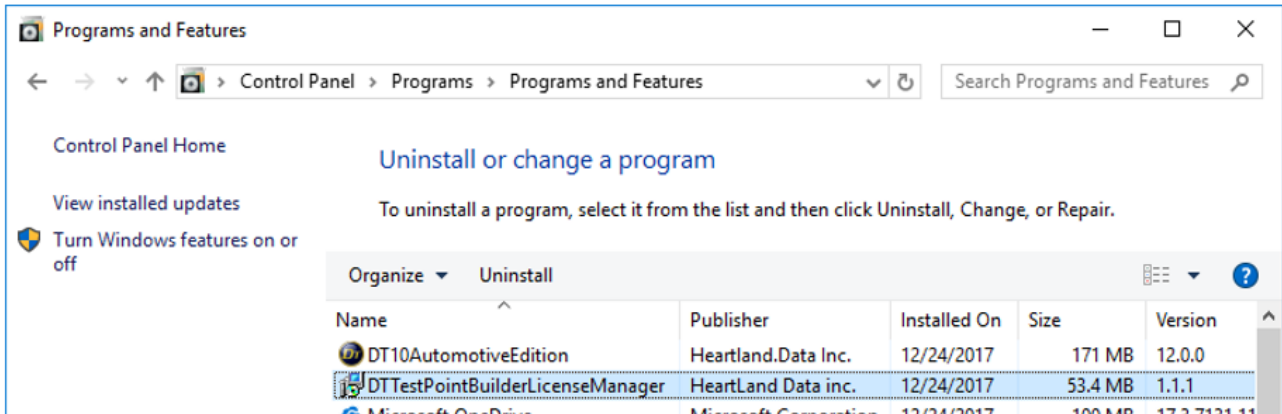
Fig.3.1.5 Confirmation of the log file

```
15:52:02 (lmgrd) -----
15:52:02 (lmgrd) Please Note:
:
:
15:52:02 (lmgrd) -----
15:52:02 (lmgrd)
15:52:02 (lmgrd)
15:52:02 (lmgrd) pid 1924
15:52:02 (lmgrd) Done rereading
15:52:02 (lmgrd) FLEXnet Licensing (v11.10.0.0 build 95001 i86_n3) started on FTPSRV(IBM PC) (11/8/2013)
15:52:02 (lmgrd) Copyright (c) 1988-2011 Flexera Software, Inc. All Rights Reserved.
15:52:02 (lmgrd) US Patents 5,390,297 and 5,671,412.
15:52:02 (lmgrd) World Wide Web: http://www.flexerasoftware.com
15:52:02 (lmgrd) License file(s): C:\Program Files\Common Files\HeartLandData\lic\DT123456_20131130_STD_1.lic
15:52:02 (lmgrd) lmgrd tcp-port 27000
15:52:02 (lmgrd) Starting vendor daemons ...
15:52:02 (lmgrd) Started hldcd (pid 1960)
15:52:02 (hldcd) FLEXnet Licensing version v11.10.0.0 build 95001 i86_n3
15:52:02 (hldcd) Using options file: "C:\Program Files\Common Files\HeartLandData\lic\hldcd.opt"
15:52:02 (hldcd) Server started on hldc-PC for:
15:52:02 (hldcd) DT10CSTD (consisting of:      DT10STD
15:52:02 (hldcd) DT10CVT)
15:52:02 (hldcd) EXTERNAL FILTERS are OFF
15:52:02 (hldcd) ALL FEATURES: INACTIVITY TIMEOUT set to 900 seconds
15:52:02 (lmgrd) hldcd using TCP-port 49155
15:53:38 (hldcd) TCP_NODELAY NOT enabled
15:53:38 (hldcd) OUT: "DT10CSTD" hldc@hldc-pc
15:53:38 (hldcd) OUT: "DT10STD" hldc@hldc-pc
15:53:57 (hldcd) IN: "DT10STD" hldc@hldc-pc
15:53:57 (hldcd) IN: "DT10CSTD" hldc@hldc-pc
```

3.1.6. Uninstall DT10LicenseManager

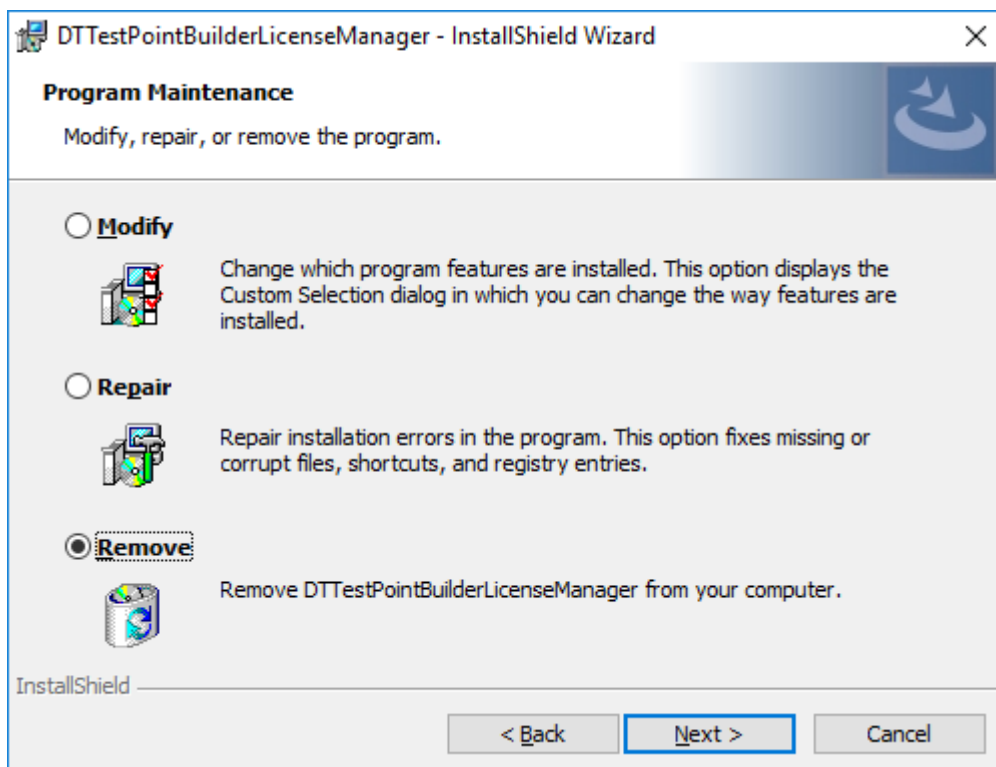
« Uninstall from "Uninstall or change a program" »

Please uninstall by selecting "DTTestPointBuilderLicenseManager" from "Programs and Features" of "Control panel".




« Uninstall from "setup.exe" »

Installed DTTestPointBuilderLicenseManager can be uninstalled by executing "setup.exe" used when setup.



Select "Remove" from "Program Maintenance" display and continue.

 Caution	<p>Please contact us if the machine used as DTTestPointBuilderLicenseManager is desired to change.</p>
---	--

3.2. License update for Windows server

3.2.1. Update at the license server machine

Please update the license file by a way of the following.

*The license file for source code structure analysis engine(license.dat) is not necessary to be updated.

<< Update by the license manager control tool “LMTOOLS” >>

1. Please start “lmtools.exe” in the installation folder of the license manager
(The default is “¥Program Files¥Common Files¥HeartLandData¥” of the boot disk.)
2. Click the tab “Config Services” of LMTOOLS window.
3. Select the license data file from the file selection dialog box displayed by clicking “Browse” button of “Path to the license file item.”
4. Close the LMTOOLS window.
5. Please select “Yes” in the message “Would you like to save the settings for the service?”
6. Restart the server machine.

3.2.2. Update at the client machine

Save the new DT10 license(*.lic) in the save folder of the old one(*.lic).

Please ensure to delete the old one. If it leaves, the new one is NOT validated.

*The license file for source code structure analysis engine(prioritylicense.dat) is not necessary to be updated.

3.2.3. Lisencing confirmation

Please refer to [3.1.5 Licensing confirmation].

3.3. Setup of a linux server

License server machine is required in case floating license system is used.

This chapter explains the preparation to install the service " DT10AutomotiveEditionLicenseManager " required to use as license server and the way to install.


3.3.1. System Requirements

OS :

- Red Hat Linux
- SUSE Linux
- * Supports both 64 and 32 bit versions.
Current available version is recommended regardless of the version.

Computer main body :

- A personal computer equipped with a processor superior to Pentium 100 MHz or equivalent is recommended.
- Free space of 5 MB or more is recommended in the memory.
- Free space of 10 MB or more is necessary in a hard disc


 Caution	Installation requires the user of an administrator. Install as an administrator.
	Operation at a virtualized environment (Hyper-V) is not assured.
	To use it via Terminal Services connection such as Windows Remote Desktop Connection, you need a license for Remote Desktop.
	Please contact your sales representative if you have any questions about license change or purchase.

3.3.2. Confirmations before the installation

Please confirm the following 3 points about a PC to install DT10AutomotiveEditionLicenseManager.

- 2 ports from 27000 to 27009 can be opened.
2 ports are used the ports from 27000 to 27009 for the license server.
- Port of 9001 for the source code structure analysis engine can be opened.
Please allow to communicate with the UDP port of 9001 because the connection from a client to the license server is blocked in case firewall is used on the network.
- PC can restart.
PC restart is required after completing the installation.

3.3.3. Installation flow

 Caution	<p>If you have already installed DT10's LicenseManager, be sure to uninstall it before installing DT10AE's LicenseManager.</p>
---	--

1. Extract "DT10AELM_For_XX_x86_64.tar.gz" in arbitrary folder.
2. Copy "License data file for the server" to the folder created 1. (DT10ServerFiles).
3. Move to (cd) the above folder by command line.
cd DT10ServerFiles
4. Enter the administrator mode
su
Password : (Enter the administrator password)
5. Specify the license data file name for the server in the argument, and execute shell script for server setup.
./DT10LM_Install.sh [the file name of the ".lic" file] [the file name of the ".dat" file]
****[' and ']' are not necessary in the actual arguments**

6. Setup completed correctly and License manager is started if displayed like the following.

Copying files...

Setting a license file.

Regist a service.

Start a service.

Starting lmgrd -c /usr/local/DT10LM/lic -l /usr/local/DT10LM/logs/dt10_lic_sv.log: [OK]

Starting almd -f /usr/local/scitools/und?lic_sv.log -l /usr/local/scitools/conf/license/lisence.dat -z: [OK]

DT10 license manager setup is completed.

Installation is completed.



Caution

DT10AutomotiveEditionLicenseManager is setup by attached shell script.

Necessary files are copied in the following. (DT10LM folder is created by the script)

/usr/local/DT10LM

/usr/local/scitools

If it is required to change the save place to different from the above, execute after rewriting the statement about the folder of the following each shell script to arbitrary path.

Second line of DT10LM_Install.sh

DT10_LM_EXTRACT=/usr/local

6th line of DT10lmsvr

DT10_LM_HOME=/usr/local/DT10LM

11th line of almsvr

UND_LM_HOME=/usr/local/scitools

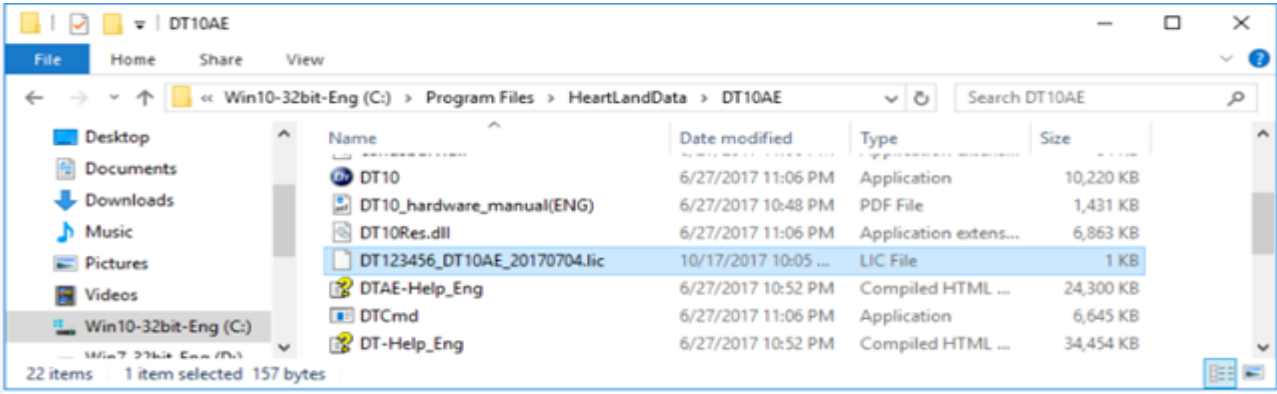
3.3.4. Setup of a client PC

This chapter explains the way to setup the client PC executes the application.

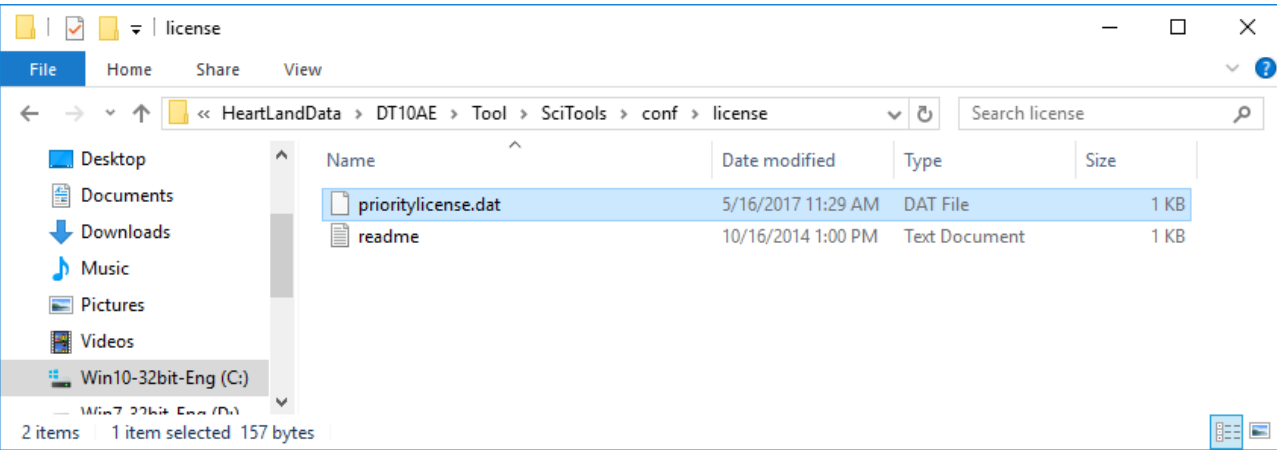
First, install the application (DT10) in the client PC.

Please refer to [1. Installation of DT10 Automotive Edition] for more details of the installation.

- 1. Copy the License data file (*.lic) to the installation folder after the installation of the application.
Copy source folder : “¥License¥Client” of the CD-ROM
Copy destination folder : [Program Files Path]HeartLandData¥DT10AE
*[Program Files Path] depends on the machine (Drive name of boot OS and so on)



- 2. Copy the License data file for the source code structure analysis engine (prioritylicense.dat) to the following folder.
Copy source folder : “¥License¥Client” of the CD-ROM
Copy destination folder : [Program Files Path] HeartLandData¥DT10AE¥Tool¥SciTools¥conf¥license
*[Program Files Path] depends on the machine (Drive name of boot OS and so on)



3.3.5. Licensing confirmation

Start the DT10 application on the client PC.

"Automotive Edition" is shown on the upper-right of starting display if the license works correctly.

In case the license is invalid or works incorrectly, "Free Edition" is shown.



Moreover, it is possible to confirm from a log file output by daemon "lmgrd".

Open the following log file "dt10_lic_sv.log" by a text editor.

```
/usr/local/DT10LM/logs/dt10_lic_sv.log
```

The log file content becomes like [Fig.3.3.5 Confirmation of the log file] if Check-out or Check-in is done correctly from the client machine.

Please refer to [3.5 Troubleshooting for the floating license] if the application can not start as "Standard Edition".

Fig.3.3.5 Confirmation of the log file

```



15:52:02 (lmgrd) -----
15:52:02 (lmgrd) Please Note:
:
:
15:52:02 (lmgrd) -----
15:52:02 (lmgrd)
15:52:02 (lmgrd)
15:52:02 (lmgrd) pid 1924
15:52:02 (lmgrd) Done rereading
15:52:02 (lmgrd) FLEXnet Licensing (v11.10.0.0 build 95001 i86_n3) started on FTPSRV(IBM PC) (11/8/2013)
15:52:02 (lmgrd) Copyright (c) 1988-2011 Flexera Software, Inc. All Rights Reserved.
15:52:02 (lmgrd) US Patents 5,390,297 and 5,671,412.
15:52:02 (lmgrd) World Wide Web: http://www.flexerasoftware.com
15:52:02 (lmgrd) License file(s): C:\Program Files\Common Files\HeartLandData\lic\DT123456_20131130_STD_1.lic
15:52:02 (lmgrd) lmgrd tcp-port 27000
15:52:02 (lmgrd) Starting vendor daemons ...
15:52:02 (lmgrd) Started hldcd (pid 1960)
15:52:02 (hldcd) FLEXnet Licensing version v11.10.0.0 build 95001 i86_n3
15:52:02 (hldcd) Using options file: "C:\Program Files\Common Files\HeartLandData\lic\hldcd.opt"
15:52:02 (hldcd) Server started on hldc-PC for:
15:52:02 (hldcd) DT10CSTD (consisting of:      DT10STD
15:52:02 (hldcd) DT10CVT)
15:52:02 (hldcd) EXTERNAL FILTERS are OFF
15:52:02 (hldcd) ALL FEATURES: INACTIVITY TIMEOUT set to 900 seconds
15:52:02 (lmgrd) hldcd using TCP-port 49155
15:53:38 (hldcd) TCP_NODELAY NOT enabled
15:53:38 (hldcd) OUT: "DT10CSTD" hldc@hldc-pc
15:53:38 (hldcd) OUT: "DT10STD" hldc@hldc-pc
15:53:57 (hldcd) IN: "DT10STD" hldc@hldc-pc
15:53:57 (hldcd) IN: "DT10CSTD" hldc@hldc-pc
    
```

3.3.6. Uninstall DT10AutomotiveEditionLicenseManager.

The way to uninstall DT10AutomotiveEditionLicenseManager is explained in this chapter.

Execute the following shell script as an administrator mode if DT10AutomotiveEditionLicenseManager is desired to uninstall.

./DT10LM_Uninstall.sh

 Caution	<p>Please contact us if the machine used as DT10AutomotiveEditionLicenseManager is desired to change.</p>
 Caution	<p>Similar to the script for the installation, please change the statement of 2nd line of the above script if the save folder of the files are changed.</p> <p>However an error displayed at some of the command execution in case the license manager is stopped by some reason or the installation failed, the script is executed by the end.(Deletion of related files)</p>

3.4. License update for linux server

3.4.1. Update at the license server machine

- Delete the old license file (.lic) in the following folder.

/usr/local/DT10LM/lic

- Copy the new one (.lic) in the folder.
- Restart the server machine.

*The license file for source code structure analysis engine(license.dat) is not necessary to be updated.

3.4.2. Update at the client machine

Save the new DT10 license(*.lic) in the save folder of the old one(*.lic).

Please ensure to delete the old one. If it leaves, the new one is NOT validated.

*The license file for source code structure analysis engine(prioritylicense.dat) is not necessary to be updated.

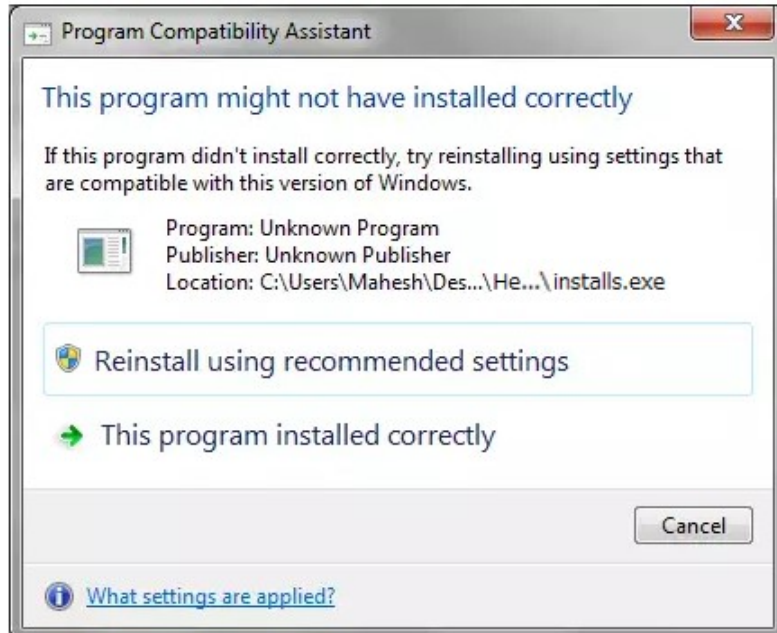
3.4.3. Licensing confirmation

Please refer to [3.3.5 Licensing confirmation].

3.5. Troubleshooting for the floating license

<< "Program Compatibility Assistant" is displayed >>

"Program Compatibility Assistant" might be displayed in case of Windows Vista or the later.



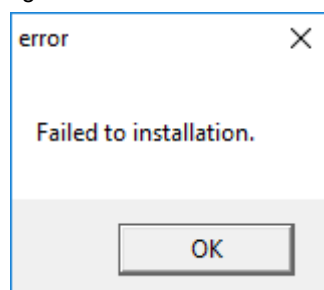
This is displayed because of "installs.exe (The one of the files that extracted in the installation folder)" which starts during the setup.

The confirmation message is displayed because "installs.exe" is not added in "Add or Remove Programs".

It works correctly at the situation, therefore, please select "This program installed correctly" and close the window when it is displayed.

<< Failed to install DTTTestPointBuilderLicenseManager >>

The following message might be displayed after clicking "Execute" button after selecting the license file during the installation of DTTTestPointBuilderLicenseManager.



The reason might be the followings:

- The same-name service has already registered (Please ensure from "Computer Management").
- "installs.exe" is not extracted correctly in the installation folder (Please ensure that there is "installs.exe" in the installation folder).
- Setup by not an administrator.

<< DTLicenseManager is not found or "Stop" on the Windows services in the license server >>

Installation of DCTestPointBuilderLicenseManager might have failed if the service "DTLicenseManager" is not registered.

Please install again after uninstalling it.

Also, if the service "DTLicenseManager" is stopped, please change it to "Start" and confirm the licenses.

<< The confirmation way of the log file of the license server >>

This chapter explains the log file in the following situations

1. **The registration of the license data is NOT correct (Incorrect flow of the server installation).**
2. **The specified information (IP address) can NOT identify the server host.**
3. **The communication of the license check is blocked by firewall.**
4. **The license is expired.**

1. The registration of the license data is NOT correct (Incorrect flow of the server installation)

```

17:40:33 (lmgrd) -----
17:40:33 (lmgrd) Please Note:
      :
      :
17:40:33 (lmgrd) -----
17:40:33 (lmgrd)
17:40:33 (lmgrd)
17:40:33 (lmgrd) pid 1988
17:40:33 (lmgrd) license manager: can't initialize:Cannot find license file.
17:40:33 (lmgrd) The license files (or license server system network addresses) attempted are
17:40:33 (lmgrd) listed below. Use LM_LICENSE_FILE to use a different license file,
17:40:33 (lmgrd) or contact your software provider for a license file.
17:40:33 (lmgrd) Filename: "C:¥flexlm¥license.dat"
17:40:33 (lmgrd) License Path: "C:¥flexlm¥license.dat"
17:40:33 (lmgrd) FLEXnet Licensing error:-1,359
17:40:33 (lmgrd) System Error:2 No such file or directory
17:40:33 (lmgrd) For further information, refer to the FLEXnet Licensing documentation,available at
"www.flexerasoftware.com".
17:40:33 (lmgrd) Using license file "C:¥flexlm¥license.dat"

```

The message "can't initialize:Cannot find license file." or "No such file or directory" is displayed if the registration of the license data is NOT correct.

In this case, please confirm the path of the license data and ensure that there is the license data file in the folder.

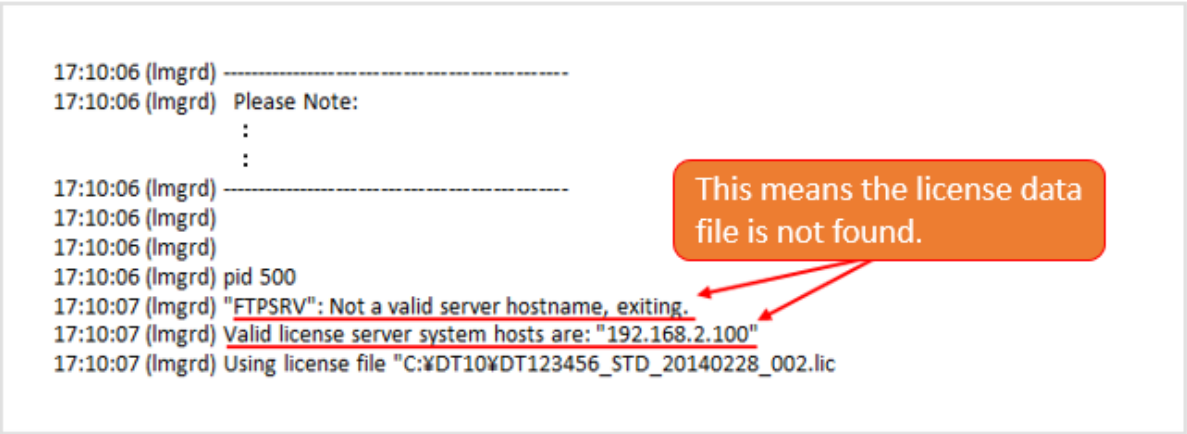
Please change the path using "lmtools.exe" in the installation folder of the license manager if registration of the license data is incorrect.

The following flow is to change the path.

- 1) Start "lmtools.exe" in the installation folder of the license manager.
(In default setting, "¥Program Files¥Common Files¥HeartLandData¥" of the boot disk.)
- 2) Click the tab "Config Services" of LMTOOLS window.

- 3) Select the license data file from the file selection dialog box displayed by clicking "Browse" button of "Path to the license file item."
- 4) Close the LMTOOLS window.
- 5) Please select "Yes" in the message "Would you like to save the settings for the service?"
- 6) Restart the server machine.

2. The specified information (IP address) can NOT identify the server host.



The message ""FTPSRV": Not a valid server hostname, exiting." or "Valid license server system hosts are: "XXX.XXX.XXX.XXX"" is displayed if the specified information(IP address) can not identify the server host. In this case, please confirm the IP address of the server. Our support staff publish the license again if the IP address is incorrect. In the environment that can not fix the IP address, please contact us because the license can be published by the host name instead of the IP address.

3. The communication of the license check is blocked by firewall

```
17:22:42 (lmgrd) -----
17:22:42 (lmgrd) Please Note:
                :
                :
17:22:42 (lmgrd) -----
17:22:42 (lmgrd)
17:22:42 (lmgrd)
17:22:42 (lmgrd) pid 2000
17:22:42 (lmgrd) Done rereading
17:22:42 (lmgrd) FLEXnet Licensing (v11.10.0.0 build 95001 i86_n3) started on FTPSRV (IBM PC) (5/2/2013)
17:22:42 (lmgrd) Copyright (c) 1988-2011 Flexera Software, Inc. All Rights Reserved.
17:22:42 (lmgrd) US Patents 5,390,297 and 5,671,412.
17:22:42 (lmgrd) World Wide Web: http://www.flexerasoftware.com
17:22:42 (lmgrd) License file(s): C:\DT_Lic\DT123456_STD_20130701_002.lic
17:22:42 (lmgrd) lmgrd tcp-port 27000
17:22:42 (lmgrd) Starting vendor daemons ...
17:22:42 (lmgrd) Started hldcd (pid 328)
17:22:43 (hldcd) FLEXnet Licensing version v11.10.0.0 build 95001 i86_n3
17:22:43 (hldcd) Server started on FTPSRV for: DT10STD
17:22:43 (hldcd) EXTERNAL FILTERS are OFF
17:22:43 (lmgrd) hldcd using TCP-port 49155
```

Normally, the message "OUT: "Edition" Client PC name" is displayed when the license is obtained starting DT10AE application.

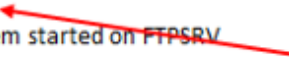
("Check-Out" means that the client PC starts the application and gets the license, and "Check-In" means that the client PC returns the license.)

If the communication is blocked by firewall, the check-out message is NOT displayed like the above example.

In this case, please ensure that the specified port(Normally it's 27000) is opened, or confirm it to the server administrator.

4. The license is expired.

```
17:08:29 (lmgrd) -----
17:08:29 (lmgrd) Please Note:
                :
                :
17:08:29 (lmgrd) -----
17:08:29 (lmgrd)
17:08:29 (lmgrd)
17:08:29 (lmgrd) pid 1984
17:08:29 (lmgrd) Done rereading
17:08:29 (lmgrd) FLEXnet Licensing (v11.10.0.0 build 95001 i86_n3) started on FTPSRV (IBM PC) (7/2/2013)
17:08:29 (lmgrd) Copyright (c) 1988-2011 Flexera Software, Inc. All Rights Reserved.
17:08:29 (lmgrd) US Patents 5,390,297 and 5,671,412.
17:08:29 (lmgrd) World Wide Web: http://www.flexerasoftware.com
17:08:29 (lmgrd) License file(s): C:\DT_Lic\DT123456_STD_20130701_002.lic
17:08:29 (lmgrd) lmgrd tcp-port 27000
17:08:29 (lmgrd) Starting vendor daemons ...
17:08:29 (lmgrd) Started hldcd (pid 2012)
17:08:30 (hldcd) FLEXnet Licensing version v11.10.0.0 build 95001 i86_n3
17:08:30 (hldcd) EXPIRED: DT10STD
17:08:30 (hldcd) License server system started on FTPSRV
17:08:30 (hldcd) No features to serve, exiting
17:08:30 (hldcd) EXITING DUE TO SIGNAL 27 Exit reason 4
17:08:34 (lmgrd) hldcd exited with status 27 (No features to serve)
17:08:34 (lmgrd) hldcd daemon found no features. Please correct
17:08:34 (lmgrd) license file and re-start daemons.
17:08:34 (lmgrd)
17:08:34 (lmgrd) This may be due to the fact that you are using
17:08:34 (lmgrd) a different license file from the one you expect.
17:08:34 (lmgrd) Check to make sure that:
17:08:34 (lmgrd) C:\DT_Lic\DT123456_STD_20130701_002.lic
17:08:34 (lmgrd) is the license file you want to use.
17:08:34 (lmgrd)
```



This means the license is expired.

The message "EXPIRED: DT10STD" is displayed if the license is expired.

Please contact us.

Email : user@hldc.co.jp

<< The message "A license to execute source code structure analysis was not found" is displayed when the Test Point auto insertion of DT-ProjectBuilder >>

Please confirm that the following service starts in the license server machine by Task Manager.

almdServiceAlt

Please confirm that the license is valid after changing to "Start" if it is stopped.

Also, please install again after uninstallation.

If the problem remains unsolved, please contact us.

Email : user@hldc.co.jp

4. Change History

Date	Version	Changed Summary (The values in [] refer to the item number and section)
April 27, 2018	Ver.1.0.0	Renewal of the Install manual.
Sept 03, 2018	Ver.1.0.1	Added notes on floating license.
June 24 2019	Ver.1.0.2	The support platform has been updated.



361 Fukui-cho, Ashikaga city, Tochigi prefecture 326-0338 Japan

Tel:+81-284-22-8791 / Fax:+81-284-22-8792

URL: heartlanddata.com